



**CENTRAL
GOVERNMENT DEBT
STATISTICS**



ÍNDICE

	<u>Page</u>
I. CENTRAL GOVERNMENT OUTSTANDING DEBT	
Central Government Debt: Nominal outstanding amounts.	1
Government Debt: Average maturity.	2
Euro-denominated Government Debt: Average interest rate outstanding debt.	3-4
Domestic Government Debt: Holders	
- Treasury Bills.	5
- Unstripped Government Bonds.	6
- Stripped Government Bonds.	7-8
- Total unstripped and stripped (principal only) Government Debt.	9
Foreign-currency denominated Government Debt:	
Breakdown by currencies of denomination.	10
II. CENTRAL GOVERNMENT FINANCING	
Government funding evolution in 2024.	11
Domestic Government Debt: Yields of new issues.	12
Government Debt auctions (2024-2023): Nominal issued and yields.	13-19
T-Bills, Government Bonds and inflation linked bonds auctions (2002-2024):	
Marginal interest rates.	20-23
Government Debt: Net financing 2024 and 2023.	24-27
Government Debt: Annual maturity profile (2024-2071).	28

III. SECONDARY MARKET

Trading in Government Debt.

- Total turnover detailed by instrument type (daily average) 29
- Electronic Market an Interdealer Brokers (monthly totals) 30

Strips market.

- Stripping/reconstituting and trading (monthly totals) 31
- Strips market with CAC's 32-33
- Strips market without CAC's 34

CENTRAL GOVERNMENT OUTSTANDING DEBT*

(Nominal value in Euro million)

DATE	NATIONAL CURRENCY DEBT											EURO BOND & W/T NOTES	OTHER DEBTS	ASSUMED DEBT	FOREIGN CURRENCY DEBT**	BANK OF SPAIN** (LOANS)	TOTAL GROSS DEBT	
	T-BILLS					T-BONDS												
	3 months	6 months	9 months	12 months	18 months	Up to 3 years	5-7 years	10 years	15 years	20-50 years	Inflation linked Bonds							
2002				15.008	20.823	29.177	54.829	109.855	35.403	17.846		7.031	2.227	955	10.447	8.359	311.961	
2003	1.053	2.476		12.366	22.871	21.988	54.609	111.747	36.938	20.687		4.986	2.106	447	8.987	7.873	309.135	
2004	774	3.007		11.399	21.808	19.080	55.835	114.641	42.528	23.793		4.072	1.995	5.740	7.094	7.388	319.154	
2005		1.720		9.584	21.990	23.904	45.562	119.649	43.733	31.814		4.072	1.733	2.668	5.833	6.902	319.162	
2006				10.414	20.887	22.672	38.754	123.446	43.733	35.470		2.700	1.668	2.173	4.125	6.416	312.457	
2007		3.089		22.266	7.090	11.604	35.529	128.558	43.733	41.496		1.677	835	1.842	3.617	5.832	307.168	
2008	5.033	2.733		44.308		15.542	43.634	136.377	49.602	47.887		610	500	1.689	5.261	5.249	358.425	
2009	6.132	20.803		58.577		41.354	55.248	161.263	58.592	60.132		610		1.533	6.493	4.665	475.402	
2010	7.085	9.458		53.941	19.272	62.013	61.327	172.645	72.833	68.339		1.230	617	1.400	6.398	4.082	540.639	
2011	7.687	11.251		49.701	21.968	61.101	86.501	189.519	81.799	70.989		1.104	617	1.264	5.089	3.499	592.090	
2012	4.439	18.826		39.361	21.986	79.129	107.847	210.791	86.821	72.260		335	40.085	1.146	2.289	2.915	688.231	
2013	4.280	8.555	23.663	43.547	9.129	84.206	143.776	235.797	80.531	78.293		335	43.040	1.056	2.104	1.943	760.256	
2014	2.620	6.291	23.856	45.160		91.457	137.292	290.842	75.480	83.955	12.422	335	43.221	24.579	2.560	972	841.041	
2015	1.917	4.751	23.532	52.236		71.279	144.105	318.309	94.738	95.752	20.844	335	39.221	19.156	2.843		889.019	
2016	2.270	3.748	23.079	53.266		71.155	124.728	335.812	108.554	115.757	28.781	335	39.080	13.538	2.902		923.003	
2017	3.806	5.254	18.715	51.059		44.244	155.044	359.304	105.006	135.325	41.803	335	36.878	9.394	2.291		968.460	
2018	1.082	3.228	14.885	51.247		42.086	139.986	384.100	117.568	157.214	55.516	335	29.135	6.804	645		1.003.829	
2019	1.167	3.196	14.914	50.650		26.644	143.302	397.633	117.568	157.214	55.991	335	29.047	6.804	650		1.005.115	
2020	1.156	3.989	15.702	58.920		62.135	124.097	419.980	143.825	197.265	60.953	335	39.532	5.736	625		1.134.248	
2021	1.494	5.650	12.720	59.546		39.885	126.323	468.614	156.275	222.140	64.397	335	50.040	4.823	656		1.212.897	
2022	1.073	5.377	13.540	54.891		59.816	103.010	516.771	165.253	250.803	78.841	335	46.003	2.830	649		1.299.193	
2023																		
January	1.174	5.222	13.879	54.599		62.680	103.010	501.129	165.253	253.680	79.423	335	45.657	1.480	646		1.288.167	
February	1.201	5.302	13.703	52.960		65.607	103.010	522.551	170.253	255.694	79.862	335	45.657	1.480	648		1.318.264	
March	1.655	5.407	13.593	51.922		68.183	103.010	532.722	170.253	257.672	80.374	335	45.657	1.455	641		1.332.881	
April	1.581	5.436	13.636	51.182		48.892	103.010	541.114	170.253	260.586	81.571	335	45.657	1.455	634		1.325.341	
May	1.493	5.602	13.918	50.472		53.388	104.355	544.774	170.253	264.799	83.077	335	45.657	1.455	646		1.340.226	
June	1.429	5.780	13.893	49.902		57.627	104.355	559.850	173.790	266.795	84.354	335	45.655	1.405	636		1.365.806	
July	1.410	5.687	14.068	49.854		59.652	83.171	566.774	175.376	269.892	85.028	335	45.655	1.405	633		1.358.938	
August	1.512	5.780	13.883	49.738		59.652	83.171	572.751	175.376	269.892	86.005	335	45.655	1.405	636		1.365.788	
September	1.533	6.001	14.540	49.412		62.484	83.171	581.769	175.376	272.184	86.611	335	45.655	1.394	641		1.381.103	
October	1.633	6.255	14.180	50.176		62.484	87.481	566.660	176.943	274.108	90.190	335	45.642	1.394	636		1.378.116	
November	1.617	6.398	14.288	49.637		63.497	89.934	570.163	176.943	278.434	84.557	335	45.642	1.394	630		1.383.468	
December	1.467	6.578	14.194	49.360		63.497	89.934	571.361	178.670	278.434	85.254	335	41.912	387	630		1.382.012	
2024																		
January	1.410	6.584	14.168	48.659		68.864	92.090	588.344	163.916	279.891	85.520	335	42.161	387	636		1.392.965	
February	1.344	6.440	14.194	48.744		70.727	94.276	594.397	165.764	285.891	86.174	335	42.161	387	634		1.411.467	
March	1.504	6.585	14.160	49.341		74.242	96.354	599.637	165.764	289.736	86.478	335	42.161	362	634		1.427.293	
April	1.503	6.997	14.052	49.226		75.742	98.540	582.658	169.042	290.771	87.502	335	42.161	362	633		1.419.524	
May	1.426	7.329	14.192	49.451		58.114	102.697	584.140	171.143	292.668	88.737	335	42.161	362	628		1.413.384	

(*) Outstanding amounts in nominal value at the end of each period, adjusted for inflation in the case of inflation linked bonds, using their respective indexation coefficients.

(**) Assumed debts included

CENTRAL GOVERNMENT DEBT: AVERAGE MATURITY

(years)

DATE	NATIONAL CURRENCY DEBT							FOREIGN CORRENCY DEBT*	BANK OF SPAIN* (Loans)	TOTAL AVERAGE MATURITY
	T-BILLS	T-BONDS (2-7y)	T-BONDS (10-50y)	EURO BOND & MT NOTES*	OTHER DEBTS	ASSUMED DEBT	TOTAL			
2002	0,61	1,96	9,31	3,21	6,50	2,42	5,95	4,13	9,26	5,98
2003	0,58	1,90	9,34	3,46	5,85	3,58	6,09	3,24	8,77	6,08
2004	0,66	1,91	9,17	3,02	5,16	6,53	6,20	3,63	8,28	6,19
2005	0,66	1,94	9,45	2,02	4,89	7,21	6,65	4,36	7,80	6,63
2006	0,68	1,82	9,22	1,75	4,05	7,75	6,73	4,35	7,31	6,71
2007	0,50	2,16	9,03	1,81	1,50	7,37	6,94	3,50	4,33	6,85
2008	0,53	2,07	9,23	3,28	0,61	8,00	6,68	3,62	3,77	6,59
2009	0,42	2,60	9,74	2,28		7,78	6,52	3,10	3,20	6,44
2010	0,53	2,55	10,09	1,24	21,08	7,47	6,70	2,94	2,62	6,62
2011	0,48	2,28	10,00	7,64	20,08	7,22	6,57	2,71	2,00	6,51
2012	0,51	2,24	9,13	23,36	12,55	6,91	6,38	4,09	1,33	6,35
2013	0,41	2,14	9,29	22,36	11,53	6,46	6,22	6,16	0,83	6,20
2014	0,43	2,20	9,10	21,36	10,63	3,44	6,28	7,18	0,33	6,28
2015	0,42	2,21	9,08	20,36	9,64	3,23	6,45	6,42		6,45
2016	0,44	2,17	9,36	19,36	8,62	3,29	6,81	5,30		6,81
2017	0,43	2,08	9,72	18,36	7,60	3,55	7,13	5,01		7,13
2018	0,45	2,09	9,77	17,36	6,64	3,58	7,45	17,02		7,45
2019	0,45	1,99	9,75	16,36	5,71	2,62	7,55	15,93		7,55
2020	0,39	1,95	9,96	15,36	6,97	2,05	7,74	14,79		7,75
2021	0,41	2,12	9,80	14,36	8,18	1,50	7,99	13,96		7,99
2022	0,41	1,92	9,44	13,36	7,82	0,96	7,85	13,40		7,86
2023										
January	0,42	1,86	9,58	13,27	7,79	1,70	7,93	13,25		7,93
February	0,43	1,81	9,54	13,19	7,71	1,63	7,93	13,26		7,93
March	0,42	1,74	9,48	13,11	7,63	1,57	7,87	13,10		7,88
April	0,43	1,91	9,43	13,03	7,55	1,49	7,96	13,02		7,96
May	0,42	1,86	9,37	12,94	7,46	1,40	7,89	12,98		7,89
June	0,42	1,81	9,34	12,86	7,38	1,37	7,86	12,88		7,86
July	0,44	1,99	9,33	12,78	7,30	1,28	7,97	12,74		7,97
August	0,44	1,90	9,23	12,69	7,21	1,20	7,89	12,72		7,89
September	0,44	1,84	9,17	12,61	7,13	1,13	7,82	12,75		7,82
October	0,43	1,86	9,28	12,52	7,05	1,04	7,88	12,70		7,88
November	0,43	1,90	9,26	12,44	6,96	0,96	7,88	12,48		7,88
December	0,42	1,82	9,18	12,36	7,50	3,18	7,84	12,34		7,84
2024										
January	0,42	1,84	9,29	12,27	7,53	3,09	7,91	12,31		7,91
February	0,42	1,82	9,32	12,19	7,45	3,01	7,93	12,26		7,93
March	0,42	1,81	9,26	12,11	7,37	3,13	7,85	12,18		7,85
April	0,42	1,78	9,39	12,02	7,29	3,05	7,92	12,16		7,92
May	0,42	2,00	9,33	11,94	7,20	2,96	7,96	12,04		7,96

(*) Treasury debt and assumed debt.

CENTRAL GOVERNMENT NATIONAL CURRENCY DEBT: AVERAGE INTEREST RATES OF OUTSTANDING DEBT*

(% & Nominal value in Euro million)

DATE	CENTRAL GOVERNMENT DEBT					ASSUMED DEBT	TOTAL AVERAGE INTEREST RATE*	Inflation linked T-Bonds	Memorandum Items: (E. Inflation)**
	T-BILLS	T-BONDS (2-7y)	T-BONDS (10-50y)	OTHER DEBTS	AVERAGE INTEREST RATE				
2002	3,526 (35.831)	4,645 (84.006)	6,318 (163.104)	3,578 (17.618)	5,357	8,959 (955)	5,369	5,369	
2003	2,438 (38.766)	4,136 (76.597)	5,812 (169.372)	3,149 (14.966)	4,814	8,731 (447)	4,820	4,820	
2004	2,259 (36.988)	3,863 (74.915)	5,579 (180.963)	2,811 (13.454)	4,637	3,495 (5.740)	4,615	4,615	
2005	2,263 (33.294)	3,265 (69.466)	5,245 (195.195)	2,824 (12.706)	4,384	4,721 (2.668)	4,387	4,387	
2006	3,158 (31.301)	3,148 (61.426)	5,002 (202.649)	2,479 (10.784)	4,353	5,358 (2.173)	4,360	4,360	
2007	4,027 (32.444)	3,399 (47.133)	4,933 (213.787)	1,992 (8.344)	4,514	6,293 (1.842)	4,525	4,525	
2008	3,510 (52.074)	3,601 (59.176)	4,772 (233.866)	0,980 (6.359)	4,319	4,431 (1.689)	4,320	4,320	
2009	0,880 (85.513)	3,068 (96.602)	4,564 (279.986)	0,728 (5.275)	3,538	2,236 (1.533)	3,533	3,533	
2010	1,689 (89.756)	3,026 (123.340)	4,570 (313.817)	1,284 (5.929)	3,691	2,298 (1.400)	3,687	3,687	
2011	3,093 (90.608)	3,292 (147.602)	4,701 (342.307)	1,757 (5.220)	4,071	2,671 (1.264)	4,068	4,068	
2012	2,664 (84.613)	3,607 (186.976)	4,720 (369.872)	0,585 (43.335)	3,900	1,650 (1.146)	3,897	3,897	
2013	1,225 (89.174)	3,530 (227.983)	4,741 (394.621)	0,918 (45.318)	3,734	1,849 (1.056)	3,731	3,731	
2014	0,358 (77.926)	3,023 (228.749)	4,457 (450.277)	1,106 (44.528)	3,463	4,028 (24.579)	3,480	1,056 (12.394)	3,466
2015	0,050 (82.435)	2,354 (215.384)	4,082 (508.799)	1,279 (39.556)	3,118	3,590 (19.156)	3,129	0,792 (20.800)	3,108
2016	-0,178 (82.363)	1,477 (195.883)	3,805 (560.123)	1,301 (39.415)	2,799	2,969 (13.538)	2,802	0,584 (28.588)	2,773

CENTRAL GOVERNMENT NATIONAL CURRENCY DEBT: AVERAGE INTEREST RATES OF OUTSTANDING DEBT*

(% & Nominal value in Euro million)

DATE	CENTRAL GOVERNMENT DEBT					ASSUMED DEBT	TOTAL AVERAGE INTEREST RATE*	Inflation linked T-Bonds	Memorandum Items: (E. Inflation)**
	T-BILLS	T-BONDS (2-5y)	T-BONDS (10-50y)	OTHER DEBTS	AVERAGE INTEREST RATE				
2017	-0,360 (78.835)	1,221 (199.288)	3,492 (599.635)	1,261 (37.213)	2,575	2,674 (9.394)	2,576	0,506 (41.006)	2,545
2018	-0,373 (70.442)	0,606 (182.072)	3,270 (658.882)	1,177 (29.470)	2,416	2,659 (6.804)	2,418	0,365 (53.464)	2,383
2019	-0,426 (68.335)	0,345 (176.516)	2,982 (688.343)	1,127 (30.182)	2,199	2,642 (6.724)	2,202	0,370 (50.718)	2,183
2020	-0,364 (79.766)	0,100 (186.231)	2,578 (761.070)	0,721 (39.867)	1,856	2,861 (5.736)	1,862	0,251 (58.640)	1,849
2021	-0,559 (79.410)	0,003 (166.207)	2,225 (847.029)	0,586 (50.375)	1,636	2,930 (4.823)	1,642	0,194 (59.627)	1,641
2022	0,728 (74.881)	0,177 (162.826)	2,131 (932.828)	0,705 (46.338)	1,729	4,486 (2.830)	1,735	0,131 (65.901)	1,731
2023									
January	1,078	0,222	2,085	0,707	1,714	4,917	1,718	0,138	1,715
February	1,386	0,269	2,122	0,707	1,773	4,917	1,777	0,145	1,772
March	1,713	0,317	2,139	0,707	1,812	5,057	1,816	0,154	1,810
April	2,004	0,425	2,155	0,707	1,881	5,057	1,885	0,160	1,876
May	2,263	0,520	2,166	0,707	1,911	5,057	1,915	0,165	1,905
June	2,521	0,589	2,194	0,707	1,956	6,216	1,960	0,174	1,950
July	2,795	0,664	2,210	0,707	2,015	6,216	2,019	0,181	2,006
August	3,036	0,664	2,217	0,707	2,034	6,216	2,039	0,187	2,025
September	3,202	0,719	2,232	0,707	2,061	6,257	2,066	0,194	2,051
October	3,336	0,804	2,212	0,707	2,057	6,257	2,062	0,270	2,053
November	3,422	0,860	2,226	0,707	2,077	6,257	2,081	0,364	2,080
December	3,479 (71.599)	0,860 (153.431)	2,229 (1.028.464)	0,751 (42.247)	2,087	6,529 (387)	2,089	0,371 (69.707)	2,087
2024									
January	3,507	0,945	2,218	0,772	2,084	6,529	2,086	0,375	2,085
February	3,544	0,992	2,234	0,772	2,103	6,529	2,104	0,383	2,103
March	3,558	1,054	2,243	0,772	2,115	6,698	2,116	0,391	2,115
April	3,566	1,094	2,226	0,772	2,103	6,698	2,104	0,398	2,105
May	3,567 (72.397)	1,348 (160.812)	2,232 (1.047.951)	0,772 (42.496)	2,151	6,698 (362)	2,152	0,402 (72.412)	2,150

(*) At the end of each period.

(**) Inflation implied in swaps market when issuing each Bond

() Outstanding amounts in brackets.

TREASURY BILLS BY HOLDERS
Term investment portfolio

(Nominal value in EURO million and %)

DATE	CREDIT INSTITUTIONS RESIDENTS		BANK OF SPAIN		INSURANCE CO.		PENSION FUNDS		MUTUAL FUNDS		OTHER FINANCIAL INSTITUTIONS		NON FINANCIAL COMPANIES		INDIVIDUAL INVESTORS		GENERAL GOVERNMENT		NON RESIDENTS		TOTAL
2002	21.780	60,79%	0	0,00%	97	0,27%	358	1,00%	6.104	17,04%	1.913	5,34%	795	2,22%	3.041	8,49%	382	1,07%	1.361	3,80%	35.831
2003	19.921	51,39%	2.647	6,83%	194	0,50%	632	1,63%	6.035	15,57%	1.892	4,88%	837	2,16%	2.465	6,36%	74	0,19%	4.070	10,50%	38.766
2004	20.307	54,90%	3.410	9,22%	200	0,54%	196	0,53%	3.658	9,89%	2.057	5,56%	899	2,43%	2.323	6,28%	1.091	2,95%	2.848	7,70%	36.988
2005	16.949	50,91%	3.276	9,84%	262	0,79%	106	0,32%	3.285	9,87%	2.436	7,32%	772	2,32%	2.267	6,81%	1.654	4,97%	2.286	6,87%	33.294
2006	14.966	47,81%	2.186	6,98%	453	1,45%	431	1,38%	2.786	8,90%	2.176	6,95%	449	1,43%	2.923	9,34%	212	0,68%	4.719	15,08%	31.301
2007	16.481	50,80%	1.666	5,14%	329	1,01%	319	0,98%	2.072	6,39%	2.412	7,43%	545	1,68%	3.559	10,97%	833	2,57%	4.228	13,03%	32.444
2008	20.081	38,56%	3.032	5,82%	280	0,54%	722	1,39%	5.949	11,42%	2.647	5,08%	1.877	3,60%	4.730	9,08%	1.606	3,08%	11.150	21,41%	52.074
2009	29.971	35,05%	445	0,52%	139	0,16%	633	0,74%	4.710	5,51%	1.387	1,62%	1.179	1,38%	2.287	2,67%	1.497	1,75%	43.265	50,59%	85.513
2010	25.543	28,46%	667	0,74%	669	0,75%	2.804	3,12%	5.820	6,48%	1.590	1,77%	1.771	1,97%	1.617	1,80%	4.049	4,51%	45.226	50,39%	89.756
2011	34.771	38,38%	3.001	3,31%	2.188	2,41%	5.236	5,78%	9.828	10,85%	822	0,91%	2.411	2,66%	3.352	3,70%	2.826	3,12%	26.172	28,88%	90.608
2012	23.358	27,61%	4	0,00%	2.006	2,37%	5.010	5,92%	9.026	10,67%	371	0,44%	1.989	2,35%	2.844	3,36%	6.343	7,50%	33.663	39,78%	84.613
2013	14.247	15,98%	23	0,03%	650	0,73%	3.053	3,42%	6.527	7,32%	138	0,15%	1.014	1,14%	1.730	1,94%	2.580	2,89%	59.211	66,40%	89.174
2014	16.719	21,45%	0	0,00%	652	0,84%	2.264	2,91%	2.293	2,94%	698	0,90%	413	0,53%	1.235	1,58%	431	0,55%	53.221	68,30%	77.926
2015	17.867	21,67%	0	0,00%	176	0,21%	1.987	2,41%	1.702	2,06%	179	0,22%	127	0,15%	710	0,86%	1.926	2,34%	57.762	70,07%	82.435
2016	15.520	18,84%	0	0,00%	593	0,72%	966	1,17%	2.951	3,58%	51	0,06%	397	0,48%	156	0,19%	374	0,45%	61.356	74,49%	82.363
2017	9.639	12,23%	0	0,00%	140	0,18%	665	0,84%	3.241	4,11%	3	0,00%	275	0,35%	15	0,02%	3.583	4,54%	61.275	77,73%	78.835
2018	10.614	15,07%	0	0,00%	208	0,29%	1.427	2,03%	4.499	6,39%	0	0,00%	32	0,05%	9	0,01%	4.264	6,05%	49.390	70,11%	70.442
2019	9.227	13,50%	0	0,00%	338	0,50%	1.564	2,29%	3.571	5,23%	0	0,00%	1	0,00%	12	0,02%	2.053	3,00%	51.570	75,47%	68.335
2020	16.839	21,11%	750	0,94%	573	0,72%	2.221	2,78%	3.920	4,91%	0	0,00%	4	0,00%	11	0,01%	233	0,29%	55.215	69,22%	79.766
2021	8.069	10,16%	4.614	5,81%	1.252	1,58%	3.141	3,95%	4.326	5,45%	0	0,00%	4	0,00%	17	0,02%	1.028	1,29%	56.960	71,73%	79.410
2022	13.989	18,68%	2.595	3,47%	2.261	3,02%	2.688	3,59%	4.320	5,77%	107	0,14%	1.971	2,63%	1.826	2,44%	2.468	3,30%	42.656	56,96%	74.881
2023																					
January	13.447	17,96%	1.881	2,51%	2.210	2,95%	2.277	3,04%	4.222	5,64%	310	0,41%	3.333	4,45%	3.687	4,92%	2.874	3,84%	40.633	54,27%	74.874
February	15.891	21,72%	1.445	1,97%	2.191	2,99%	2.052	2,80%	4.193	5,73%	322	0,44%	4.975	6,80%	7.605	10,39%	3.056	4,18%	31.435	42,96%	73.166
March	15.744	21,69%	1.325	1,83%	2.455	3,38%	1.548	2,13%	4.124	5,68%	495	0,68%	5.993	8,26%	10.847	14,95%	3.185	4,39%	26.860	37,01%	72.577
April	15.267	21,25%	955	1,33%	2.679	3,73%	1.294	1,80%	4.307	6,00%	441	0,61%	6.228	8,67%	13.206	18,38%	3.215	4,48%	24.243	33,75%	71.834
May	13.720	19,19%	805	1,13%	2.340	3,27%	1.334	1,87%	4.338	6,07%	444	0,62%	6.542	9,15%	14.947	20,91%	3.514	4,92%	23.502	32,88%	71.486
June	12.197	17,18%	750	1,06%	2.173	3,06%	1.073	1,51%	4.519	6,37%	632	0,89%	6.371	8,97%	16.608	23,39%	3.250	4,58%	23.430	33,00%	71.004
July	11.155	15,71%	290	0,41%	2.460	3,46%	1.354	1,91%	5.356	7,54%	538	0,76%	6.485	9,13%	18.523	26,08%	3.479	4,90%	21.379	30,10%	71.018
August	10.374	14,63%	290	0,41%	2.633	3,71%	1.282	1,81%	5.613	7,92%	490	0,69%	6.636	9,38%	20.348	28,69%	3.745	5,28%	19.503	27,50%	70.913
September	10.764	15,06%	290	0,41%	2.424	3,39%	1.426	1,99%	5.929	8,29%	437	0,61%	6.426	8,99%	21.352	29,87%	3.732	5,22%	18.704	26,17%	71.485
October	10.549	14,60%	335	0,46%	2.587	3,58%	1.477	2,04%	6.097	8,44%	455	0,63%	6.421	8,89%	22.893	31,69%	3.940	5,45%	17.490	24,21%	72.244
November	10.583	14,71%	335	0,47%	2.451	3,41%	1.134	1,58%	6.232	8,66%	372	0,52%	6.015	8,36%	23.977	33,33%	4.104	5,70%	16.737	23,26%	71.940
December	9.951	13,90%	335	0,47%	2.672	3,73%	1.283	1,79%	6.241	8,72%	354	0,49%	5.544	7,74%	24.428	34,12%	4.262	5,95%	16.529	23,09%	71.599
2024																					
January	9.263	13,08%	335	0,47%	2.552	3,60%	1.242	1,75%	6.027	8,51%	270	0,38%	5.193	7,33%	24.664	34,83%	4.648	6,56%	16.628	23,48%	70.820
February	7.645	10,81%	350	0,49%	2.215	3,13%	1.215	1,72%	6.778	9,58%	238	0,34%	5.725	8,10%	24.614	34,80%	4.712	6,66%	17.230	24,36%	70.721
March	7.418	10,36%	245	0,34%	2.222	3,10%	1.057	1,48%	7.116	9,94%	475	0,66%	5.764	8,05%	25.823	36,07%	5.152	7,20%	16.320	22,80%	71.590

Source: 2002-2015 Bank of Spain (Obtained using Iberclear data), 2016-2023 Bank or Spain (Obtained using Securities Holdings Statistics data).
Due to the changes in the source of the data the series present a break in 2016.

UNSTRIPPED GOVERNMENT BONDS BY HOLDERS
Term investment portfolio

(Nominal value in EURO million and %)

DATE	CREDIT INSTITUTIONS RESIDENTS		BANK OF SPAIN		INSURANCE CO.		PENSION FUNDS		MUTUAL FUNDS		OTHER FINANCIAL INSTITUTIONS		NON FINANCIAL COMPANIES		INDIVIDUAL INVESTORS		GENERAL GOVERNMENT		NON RESIDENTS		T O T A L
2002	68.126	28,99%	4.087	1,74%	17.147	7,30%	4.510	1,92%	10.546	4,49%	1.832	0,78%	6.718	2,86%	2.372	1,01%	5.417	2,30%	114.273	48,62%	235.029
2003	84.185	36,08%	4.316	1,85%	15.702	6,73%	4.083	1,75%	7.723	3,31%	1.470	0,63%	6.463	2,77%	1.983	0,85%	9.491	4,07%	97.898	41,96%	233.313
2004	66.489	27,37%	5.344	2,20%	16.689	6,87%	3.571	1,47%	5.927	2,44%	1.458	0,60%	7.021	2,89%	1.895	0,78%	16.155	6,65%	118.379	48,73%	242.928
2005	62.076	24,52%	6.817	2,69%	16.550	6,54%	4.349	1,72%	6.142	2,43%	2.575	1,02%	8.360	3,30%	1.822	0,72%	18.315	7,24%	126.124	49,83%	253.130
2006	52.782	20,99%	6.329	2,52%	15.875	6,31%	5.039	2,00%	6.063	2,41%	2.821	1,12%	8.789	3,50%	1.757	0,70%	18.285	7,27%	133.674	53,17%	251.414
2007	55.902	22,63%	7.395	2,99%	15.734	6,37%	5.313	2,15%	5.017	2,03%	3.831	1,55%	7.033	2,85%	1.878	0,76%	21.906	8,87%	122.992	49,79%	247.001
2008	65.191	23,29%	11.937	4,26%	13.138	4,69%	4.037	1,44%	3.793	1,36%	4.443	1,59%	7.029	2,51%	1.518	0,54%	30.289	10,82%	138.543	49,49%	279.918
2009	103.085	28,43%	14.142	3,90%	16.133	4,45%	6.087	1,68%	7.846	2,16%	3.397	0,94%	8.361	2,31%	1.795	0,50%	42.421	11,70%	159.313	43,94%	362.579
2010	97.750	23,41%	17.863	4,28%	26.189	6,27%	8.062	1,93%	13.128	3,14%	1.961	0,47%	7.899	1,89%	1.824	0,44%	57.247	13,71%	185.688	44,46%	417.611
2011	139.395	29,85%	24.670	5,28%	36.995	7,92%	10.628	2,28%	15.691	3,36%	1.372	0,29%	6.927	1,48%	3.034	0,65%	60.609	12,98%	167.598	35,89%	466.920
2012	171.038	32,25%	29.625	5,59%	42.522	8,02%	10.392	1,96%	15.964	3,01%	789	0,15%	10.836	2,04%	2.543	0,48%	61.841	11,66%	184.836	34,85%	530.385
2013	174.846	29,53%	29.461	4,98%	53.542	9,04%	13.691	2,31%	23.108	3,90%	736	0,12%	15.351	2,59%	2.972	0,50%	56.833	9,60%	221.614	37,43%	592.154
2014	205.864	31,52%	29.397	4,50%	63.111	9,66%	11.863	1,82%	23.730	3,63%	1.975	0,30%	10.583	1,62%	2.695	0,41%	45.354	6,94%	258.633	39,59%	653.207
2015	180.156	25,54%	71.160	10,09%	62.815	8,91%	10.869	1,54%	15.022	2,13%	1.192	0,17%	10.609	1,50%	3.763	0,53%	37.456	5,31%	312.311	44,28%	705.353
2016	153.515	20,70%	138.590	18,68%	74.269	10,01%	12.699	1,71%	18.837	2,54%	752	0,10%	2.240	0,30%	2.672	0,36%	22.601	3,05%	315.553	42,54%	741.729
2017	147.263	18,42%	195.502	24,45%	77.852	9,74%	10.541	1,32%	15.480	1,94%	767	0,10%	1.335	0,17%	1.685	0,21%	13.851	1,73%	335.344	41,94%	799.620
2018	145.369	17,00%	217.923	25,48%	81.407	9,52%	9.752	1,14%	13.932	1,63%	694	0,08%	1.232	0,14%	1.624	0,19%	9.614	1,12%	373.579	43,69%	855.127
2019	133.600	15,18%	212.598	24,16%	78.689	8,94%	8.756	0,99%	12.836	1,46%	763	0,09%	840	0,10%	1.396	0,16%	12.876	1,46%	417.772	47,47%	880.127
2020	147.880	15,19%	301.775	30,99%	77.457	7,95%	9.366	0,96%	11.604	1,19%	932	0,10%	757	0,08%	1.134	0,12%	11.259	1,16%	411.560	42,27%	973.725
2021	130.027	12,49%	382.335	36,72%	74.072	7,11%	7.073	0,68%	8.330	0,80%	1.028	0,10%	782	0,08%	980	0,09%	11.533	1,11%	425.080	40,82%	1.041.241
2022	153.370	13,60%	410.979	36,43%	73.720	6,54%	7.040	0,62%	19.671	1,74%	1.279	0,11%	995	0,09%	1.390	0,12%	15.990	1,42%	443.551	39,32%	1.127.985
2023																					
January	153.799	13,74%	405.954	36,28%	72.122	6,45%	7.501	0,67%	21.532	1,92%	1.270	0,11%	1.057	0,09%	1.430	0,13%	15.537	1,39%	438.814	39,21%	1.119.015
February	156.299	13,58%	408.234	35,47%	73.426	6,38%	8.054	0,70%	25.038	2,18%	1.382	0,12%	1.185	0,10%	1.560	0,14%	15.922	1,38%	459.813	39,95%	1.150.913
March	159.448	13,67%	411.800	35,31%	74.037	6,35%	7.486	0,64%	26.792	2,30%	1.310	0,11%	1.082	0,09%	1.630	0,14%	17.508	1,50%	465.009	39,88%	1.166.102
April	152.999	13,21%	409.453	35,34%	74.637	6,44%	7.209	0,62%	27.114	2,34%	1.309	0,11%	1.240	0,11%	1.708	0,15%	17.305	1,49%	465.560	40,19%	1.158.534
May	152.034	12,96%	411.644	35,10%	75.896	6,47%	7.575	0,65%	29.517	2,52%	1.452	0,12%	1.294	0,11%	1.796	0,15%	17.671	1,51%	473.841	40,41%	1.172.718
June	154.208	12,87%	412.609	34,44%	76.767	6,41%	7.862	0,66%	29.655	2,48%	2.024	0,17%	1.320	0,11%	1.898	0,16%	17.376	1,45%	494.439	41,27%	1.198.157
July	152.496	12,80%	406.793	34,16%	77.446	6,50%	7.769	0,65%	30.684	2,58%	2.008	0,17%	1.300	0,11%	1.867	0,16%	17.494	1,47%	493.105	41,40%	1.190.962
August	151.471	12,65%	407.791	34,05%	77.547	6,48%	7.704	0,64%	30.744	2,57%	2.002	0,17%	1.345	0,11%	1.918	0,16%	17.334	1,45%	499.671	41,73%	1.197.527
September	157.929	13,03%	408.468	33,69%	78.387	6,47%	7.798	0,64%	32.037	2,64%	2.082	0,17%	1.361	0,11%	2.012	0,17%	17.447	1,44%	504.754	41,64%	1.212.276
October	157.008	12,99%	401.681	33,24%	78.094	6,46%	7.891	0,65%	32.517	2,67%	2.063	0,17%	1.296	0,11%	1.879	0,16%	17.556	1,45%	508.683	42,10%	1.208.368
November	157.290	12,95%	401.482	33,05%	79.219	6,52%	7.809	0,64%	31.354	2,58%	2.068	0,17%	1.728	0,14%	2.067	0,17%	17.733	1,46%	513.893	42,31%	1.214.644
December	155.855	12,80%	401.868	33,00%	79.985	6,57%	7.507	0,62%	31.212	2,56%	2.105	0,17%	1.385	0,11%	2.129	0,17%	17.697	1,45%	518.200	42,55%	1.217.943
2024																					
January	156.598	12,73%	395.764	32,16%	79.026	6,42%	7.952	0,65%	30.651	2,49%	2.136	0,17%	1.589	0,13%	2.179	0,18%	17.655	1,43%	537.038	43,64%	1.230.588
February	161.727	12,95%	397.470	31,82%	81.151	6,50%	8.205	0,66%	31.370	2,51%	2.184	0,17%	1.629	0,13%	2.290	0,18%	18.085	1,45%	544.850	43,62%	1.248.961
March	164.972	13,05%	399.084	31,57%	82.001	6,49%	7.382	0,58%	31.619	2,50%	2.118	0,17%	1.697	0,13%	2.403	0,19%	22.900	1,81%	549.997	43,51%	1.264.172

Source: 2002-2015 Bank of Spain (Obtained using Iberclear data), 2016-2023 Bank or Spain (Obtained using Securities Holdings Statistics data).
Due to the changes in the source of the data the series present a break in 2016.

STRIPPED GOVERNMENT BONDS BY HOLDERS
Term investment portfolio

PRINCIPALS ONLY

(Nominal value in EURO million and %)

DATE	CREDIT INSTITUTIONS RESIDENTS		BANK OF SPAIN		INSURANCE CO.		PENSION FUNDS		MUTUAL FUNDS		OTHER FINANCIAL INSTITUTIONS		NON FINANCIAL COMPANIES		INDIVIDUAL INVESTORS		GENERAL GOVERNMENT		NON RESIDENTS		TOTAL
2002	1.549	12,31%	0	0,00%	1.668	13,26%	145	1,15%	4.937	39,24%	20	0,16%	413	3,28%	1.223	9,72%	4	0,03%	2.623	20,85%	12.582
2003	1.724	13,11%	0	0,00%	2.467	18,75%	310	2,36%	4.874	37,05%	49	0,37%	539	4,10%	605	4,60%	13	0,10%	2.573	19,56%	13.155
2004	1.679	12,48%	0	0,00%	2.510	18,66%	347	2,58%	4.182	31,09%	409	3,04%	451	3,35%	601	4,47%	3	0,02%	3.269	24,30%	13.450
2005	1.395	11,60%	0	0,00%	2.476	20,58%	460	3,82%	2.965	24,64%	50	0,42%	338	2,81%	598	4,97%	0	0,00%	3.750	31,17%	12.031
2006	1.065	8,09%	0	0,00%	2.388	18,15%	501	3,81%	2.920	22,19%	34	0,26%	562	4,27%	594	4,51%	0	0,00%	5.097	38,73%	13.160
2007	1.117	7,75%	0	0,00%	2.447	16,97%	498	3,45%	2.842	19,71%	65	0,45%	413	2,86%	709	4,92%	0	0,00%	6.329	43,89%	14.420
2008	1.051	7,71%	0	0,00%	3.463	25,42%	486	3,57%	1.847	13,56%	59	0,43%	222	1,63%	658	4,83%	0	0,00%	5.839	42,86%	13.624
2009	1.035	7,39%	0	0,00%	3.657	26,10%	562	4,01%	1.681	12,00%	57	0,41%	151	1,08%	638	4,55%	0	0,00%	6.230	44,47%	14.010
2010	1.344	6,88%	0	0,00%	6.688	34,22%	1.006	5,15%	2.303	11,78%	39	0,20%	1.058	5,41%	128	0,65%	0	0,00%	6.978	35,70%	19.545
2011	1.291	5,62%	0	0,00%	8.636	37,57%	1.711	7,44%	2.579	11,22%	30	0,13%	1.826	7,94%	81	0,35%	9	0,04%	6.826	29,69%	22.989
2012	2.048	7,74%	0	0,00%	10.197	38,53%	3.911	14,78%	2.599	9,82%	71	0,27%	2.325	8,79%	63	0,24%	8	0,03%	5.242	19,81%	26.463
2013	1.942	6,38%	0	0,00%	12.009	39,44%	4.532	14,88%	4.435	14,56%	52	0,17%	2.737	8,99%	79	0,26%	106	0,35%	4.558	14,97%	30.450
2014	1.872	4,90%	0	0,00%	13.239	34,65%	6.761	17,69%	8.009	20,96%	53	0,14%	2.757	7,21%	63	0,16%	47	0,12%	5.414	14,17%	38.213
2015	1.939	4,89%	0	0,00%	12.530	31,62%	6.973	17,59%	8.625	21,76%	61	0,15%	2.514	6,34%	62	0,16%	497	1,25%	6.431	16,23%	39.631
2016	1.209	2,82%	0	0,00%	13.202	30,80%	5.531	12,90%	13.771	32,13%	0	0,00%	718	1,68%	17	0,04%	8	0,02%	8.408	19,62%	42.865
2017	1.255	3,11%	0	0,00%	13.224	32,81%	4.102	10,18%	12.067	29,94%	0	0,00%	619	1,54%	17	0,04%	288	0,71%	8.731	21,66%	40.304
2018	971	2,47%	0	0,00%	13.244	33,71%	3.998	10,18%	11.036	28,09%	0	0,00%	2	0,00%	14	0,04%	279	0,71%	9.747	24,81%	39.291
2019	939	2,65%	0	0,00%	12.657	35,70%	2.413	6,81%	8.407	23,71%	0	0,00%	5	0,01%	13	0,04%	265	0,75%	10.752	30,33%	35.450
2020	526	1,63%	0	0,00%	12.836	39,84%	1.508	4,68%	6.723	20,87%	0	0,00%	1	0,00%	11	0,03%	184	0,57%	10.427	32,37%	32.216
2021	2.010	6,36%	0	0,00%	12.741	40,29%	1.068	3,38%	4.743	15,00%	0	0,00%	0	0,00%	11	0,03%	184	0,58%	10.865	34,36%	31.622
2022	2.474	7,37%	0	0,00%	13.065	38,92%	849	2,53%	5.293	15,77%	0	0,00%	1	0,00%	18	0,05%	179	0,53%	11.692	34,83%	33.569
2023																					
January	2.418	7,30%	0	0,00%	12.998	39,21%	866	2,61%	5.037	15,20%	0	0,00%	1	0,00%	19	0,06%	179	0,54%	11.628	35,08%	33.145
February	2.420	7,28%	0	0,00%	12.659	38,11%	863	2,60%	5.222	15,72%	0	0,00%	1	0,00%	20	0,06%	179	0,54%	11.857	35,69%	33.222
March	2.391	7,17%	0	0,00%	12.594	37,75%	860	2,58%	5.380	16,13%	0	0,00%	1	0,00%	21	0,06%	179	0,54%	11.931	35,77%	33.357
April	2.409	7,21%	0	0,00%	12.607	37,73%	858	2,57%	5.373	16,08%	0	0,00%	2	0,01%	23	0,07%	179	0,54%	11.967	35,81%	33.418
May	2.524	7,51%	0	0,00%	12.685	37,75%	836	2,49%	5.385	16,02%	0	0,00%	4	0,01%	24	0,07%	179	0,53%	11.965	35,61%	33.601
June	2.465	7,33%	0	0,00%	12.679	37,71%	831	2,47%	5.312	15,80%	0	0,00%	4	0,01%	25	0,07%	179	0,53%	12.126	36,07%	33.621
July	2.542	7,52%	0	0,00%	12.345	36,54%	827	2,45%	5.338	15,80%	0	0,00%	4	0,01%	25	0,07%	179	0,53%	12.528	37,08%	33.788
August	2.510	7,42%	0	0,00%	12.338	36,47%	777	2,30%	5.330	15,75%	0	0,00%	4	0,01%	25	0,07%	179	0,53%	12.668	37,44%	33.833
September	2.513	7,44%	0	0,00%	12.343	36,53%	775	2,29%	5.326	15,76%	0	0,00%	4	0,01%	26	0,08%	179	0,53%	12.621	37,35%	33.787
October	2.591	7,76%	0	0,00%	12.228	36,62%	774	2,32%	4.860	14,56%	0	0,00%	1	0,00%	15	0,04%	179	0,54%	12.741	38,16%	33.388
November	2.597	7,75%	0	0,00%	12.057	35,96%	768	2,29%	4.875	14,54%	0	0,00%	1	0,00%	16	0,05%	179	0,53%	13.034	38,88%	33.528
December	2.599	7,72%	0	0,00%	12.194	36,23%	758	2,25%	4.836	14,37%	0	0,00%	1	0,00%	17	0,05%	179	0,53%	13.074	38,84%	33.659
2024																					
January	2.565	7,82%	0	0,00%	12.038	36,68%	726	2,21%	4.301	13,10%	0	0,00%	1	0,00%	17	0,05%	178	0,54%	12.997	39,60%	32.823
February	2.532	7,69%	0	0,00%	12.257	37,24%	719	2,18%	4.288	13,03%	0	0,00%	8	0,02%	43	0,13%	178	0,54%	12.893	39,17%	32.916
March	2.687	8,14%	0	0,00%	12.102	36,68%	719	2,18%	4.279	12,97%	0	0,00%	47	0,14%	138	0,42%	178	0,54%	12.846	38,93%	32.997

STRIPPED GOVERNMENT BONDS BY HOLDERS
Term investment portfolio

COUPONS ONLY

(Nominal value in EURO million and %)

DATE	CREDIT INSTITUTIONS RESIDENTS		BANK OF SPAIN		INSURANCE CO.		PENSION FUNDS		MUTUAL FUNDS		OTHER FINANCIAL INSTITUTIONS		NON FINANCIAL COMPANIES		INDIVIDUAL INVESTORS		GENERAL GOVERNMENT		NON RESIDENTS		TOTAL
2002	1.233	15,39%	0	0,00%	2.145	26,77%	125	1,56%	892	11,13%	0	0,00%	142	1,77%	775	9,67%	0	0,00%	2.700	33,70%	8.012
2003	1.591	19,02%	0	0,00%	2.349	28,07%	157	1,88%	889	10,63%	7	0,08%	170	2,03%	742	8,87%	0	0,00%	2.462	29,43%	8.367
2004	1.378	16,02%	0	0,00%	2.379	27,65%	250	2,91%	803	9,33%	15	0,17%	144	1,67%	731	8,50%	0	0,00%	2.905	33,76%	8.604
2005	1.181	13,63%	0	0,00%	2.465	28,44%	334	3,85%	783	9,04%	21	0,24%	113	1,30%	722	8,33%	0	0,00%	3.047	35,16%	8.666
2006	1.201	12,06%	0	0,00%	2.623	26,34%	251	2,52%	704	7,07%	26	0,26%	87	0,87%	713	7,16%	0	0,00%	4.353	43,71%	9.958
2007	1.157	10,60%	0	0,00%	2.870	26,28%	374	3,43%	637	5,83%	17	0,16%	81	0,74%	724	6,63%	0	0,00%	5.059	46,33%	10.919
2008	2.654	22,74%	50	0,43%	2.478	21,24%	300	2,57%	431	3,69%	8	0,07%	78	0,67%	686	5,88%	0	0,00%	4.984	42,71%	11.669
2009	2.642	21,46%	0	0,00%	2.471	20,07%	432	3,51%	463	3,76%	12	0,10%	327	2,66%	659	5,35%	0	0,00%	5.307	43,10%	12.314
2010	2.771	15,32%	0	0,00%	4.210	23,27%	1.330	7,35%	866	4,79%	11	0,06%	2.203	12,18%	737	4,07%	0	0,00%	5.964	32,96%	18.092
2011	3.065	15,32%	0	0,00%	5.074	25,35%	2.229	11,14%	1.253	6,26%	16	0,08%	2.846	14,22%	810	4,05%	2	0,01%	4.717	23,57%	20.012
2012	2.832	13,56%	0	0,00%	5.615	26,89%	2.594	12,42%	1.225	5,87%	10	0,05%	3.039	14,56%	820	3,93%	2	0,01%	4.741	22,71%	20.878
2013	2.453	11,21%	0	0,00%	6.768	30,92%	2.942	13,44%	1.375	6,28%	30	0,14%	3.132	14,31%	827	3,78%	5	0,02%	4.359	19,91%	21.890
2014	2.664	11,00%	0	0,00%	9.676	39,94%	3.269	13,49%	2.266	9,35%	9	0,04%	1.343	5,54%	218	0,90%	19	0,08%	4.765	19,67%	24.229
2015	2.820	11,37%	0	0,00%	9.456	38,14%	3.625	14,62%	2.493	10,05%	13	0,05%	1.440	5,81%	226	0,91%	12	0,05%	4.709	18,99%	24.794
2016	2.740	10,62%	0	0,00%	9.044	35,06%	3.677	14,25%	3.412	13,23%	0	0,00%	1.420	5,50%	116	0,45%	41	0,16%	5.346	20,72%	25.797
2017	2.400	9,94%	0	0,00%	8.978	37,18%	3.401	14,08%	2.710	11,22%	4	0,01%	500	2,07%	94	0,39%	844	3,49%	5.219	21,61%	24.150
2018	2.717	11,52%	0	0,00%	8.833	37,46%	3.443	14,60%	2.156	9,14%	4	0,01%	37	0,16%	12	0,05%	836	3,54%	5.543	23,51%	23.582
2019	2.688	12,37%	0	0,00%	8.559	39,40%	2.707	12,46%	1.358	6,25%	4	0,02%	16	0,07%	9	0,04%	837	3,85%	5.547	25,53%	21.726
2020	2.753	13,31%	0	0,00%	8.504	41,12%	1.703	8,23%	1.071	5,18%	4	0,02%	3	0,01%	7	0,03%	802	3,88%	5.837	28,22%	20.684
2021	2.570	11,84%	0	0,00%	8.224	37,88%	1.188	5,47%	708	3,26%	3	0,02%	3	0,01%	6	0,03%	775	3,57%	8.234	37,93%	21.711
2022	2.267	9,88%	0	0,00%	8.399	36,61%	765	3,34%	590	2,57%	10	0,04%	14	0,06%	7	0,03%	809	3,53%	10.081	43,94%	22.943
2023																					
January	2.156	9,57%	0	0,00%	8.240	36,57%	750	3,33%	585	2,60%	0	0,00%	9	0,04%	7	0,03%	799	3,55%	9.983	44,31%	22.530
February	2.129	9,47%	0	0,00%	8.234	36,64%	751	3,34%	638	2,84%	0	0,00%	9	0,04%	9	0,04%	801	3,57%	9.900	44,06%	22.470
March	2.120	9,43%	0	0,00%	8.238	36,67%	744	3,31%	637	2,83%	0	0,00%	9	0,04%	11	0,05%	795	3,54%	9.914	44,12%	22.468
April	2.141	9,53%	0	0,00%	8.236	36,66%	719	3,20%	635	2,83%	0	0,00%	4	0,02%	13	0,06%	795	3,54%	9.923	44,17%	22.465
May	2.262	9,95%	0	0,00%	8.231	36,20%	719	3,16%	703	3,09%	8	0,03%	4	0,02%	14	0,06%	802	3,52%	9.997	43,96%	22.740
June	2.320	10,20%	0	0,00%	8.090	35,56%	716	3,15%	699	3,07%	0	0,00%	4	0,02%	17	0,08%	792	3,48%	10.109	44,44%	22.747
July	2.124	9,65%	0	0,00%	7.720	35,06%	712	3,23%	773	3,51%	0	0,00%	4	0,02%	17	0,08%	674	3,06%	9.995	45,39%	22.019
August	2.064	9,35%	0	0,00%	7.717	34,97%	761	3,45%	801	3,63%	0	0,00%	4	0,02%	17	0,08%	674	3,05%	10.032	45,45%	22.070
September	2.012	9,11%	0	0,00%	7.723	34,99%	764	3,46%	803	3,64%	0	0,00%	4	0,02%	17	0,08%	674	3,05%	10.077	45,65%	22.074
October	1.930	8,79%	0	0,00%	7.690	35,02%	761	3,46%	705	3,21%	0	0,00%	4	0,02%	18	0,08%	674	3,07%	10.180	46,35%	21.961
November	1.898	8,60%	0	0,00%	7.700	34,87%	755	3,42%	712	3,23%	0	0,00%	4	0,02%	19	0,08%	674	3,05%	10.318	46,73%	22.079
December	1.896	8,54%	0	0,00%	7.708	34,74%	753	3,39%	727	3,28%	0	0,00%	4	0,02%	19	0,09%	682	3,07%	10.402	46,88%	22.190
2024																					
January	1.778	8,15%	0	0,00%	7.555	34,63%	665	3,05%	749	3,43%	0	0,00%	7	0,03%	12	0,05%	674	3,09%	10.377	47,57%	21.817
February	1.839	8,41%	0	0,00%	7.433	33,98%	664	3,04%	762	3,48%	0	0,00%	7	0,03%	12	0,05%	674	3,08%	10.481	47,92%	21.871
March	1.878	8,52%	0	0,00%	7.442	33,75%	665	3,01%	756	3,43%	0	0,00%	7	0,03%	12	0,06%	674	3,06%	10.618	48,15%	22.052

Source: 2002-2015 Bank of Spain (Obtained using Iberclear data), 2016-2023 Bank of Spain (Obtained using Securities Holdings Statistics data).
Due to the changes in the source of the data the series present a break in 2016.

TOTAL UNSTRIPPED AND STRIPPED (PRINCIPAL ONLY) GOVERNMENT DEBT BY HOLDERS
Term investment portfolio

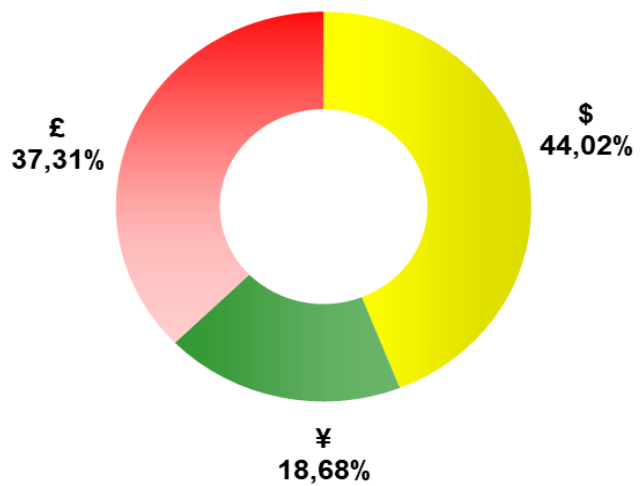
(Nominal value in EURO million and %)

DATE	CREDIT INSTITUTIONS RESIDENTS		BANK OF SPAIN		INSURANCE CO.		PENSION FUNDS		MUTUAL FUNDS		OTHER FINANCIAL INSTITUTIONS		NON FINANCIAL COMPANIES		INDIVIDUAL INVESTORS		GENERAL GOVERNMENT		NON RESIDENTS		TOTAL
2002	91.455	32,27%	4.087	1,44%	18.912	6,67%	5.013	1,77%	21.587	7,62%	3.765	1,33%	7.926	2,80%	6.636	2,34%	5.803	2,05%	118.257	41,72%	283.442
2003	105.830	37,10%	6.963	2,44%	18.363	6,44%	5.025	1,76%	18.632	6,53%	3.411	1,20%	7.839	2,75%	5.053	1,77%	9.578	3,36%	104.541	36,65%	285.234
2004	88.475	30,16%	8.754	2,98%	19.399	6,61%	4.114	1,40%	13.767	4,69%	3.924	1,34%	8.371	2,85%	4.819	1,64%	17.249	5,88%	124.496	42,44%	293.366
2005	80.420	26,95%	10.093	3,38%	19.288	6,46%	4.915	1,65%	12.392	4,15%	5.061	1,70%	9.470	3,17%	4.687	1,57%	19.969	6,69%	132.160	44,28%	298.455
2006	68.813	23,26%	8.515	2,88%	18.716	6,33%	5.971	2,02%	11.769	3,98%	5.031	1,70%	9.800	3,31%	5.274	1,78%	18.497	6,25%	143.490	48,50%	295.875
2007	73.500	25,01%	9.061	3,08%	18.510	6,30%	6.130	2,09%	9.931	3,38%	6.308	2,15%	7.991	2,72%	6.146	2,09%	22.739	7,74%	133.549	45,45%	293.865
2008	86.323	24,98%	14.969	4,33%	16.881	4,88%	5.245	1,52%	11.589	3,35%	7.149	2,07%	9.128	2,64%	6.906	2,00%	31.895	9,23%	155.532	45,00%	345.616
2009	134.091	29,02%	14.587	3,16%	19.929	4,31%	7.282	1,58%	14.237	3,08%	4.841	1,05%	9.691	2,10%	4.720	1,02%	43.918	9,50%	208.808	45,19%	462.102
2010	124.637	23,65%	18.530	3,52%	33.546	6,37%	11.872	2,25%	21.251	4,03%	3.590	0,68%	10.728	2,04%	3.569	0,68%	61.296	11,63%	237.892	45,15%	526.912
2011	175.457	30,22%	27.671	4,77%	47.819	8,24%	17.575	3,03%	28.098	4,84%	2.224	0,38%	11.164	1,92%	6.467	1,11%	63.444	10,93%	200.596	34,55%	580.517
2012	196.444	30,62%	29.629	4,62%	54.725	8,53%	19.313	3,01%	27.589	4,30%	1.231	0,19%	15.150	2,36%	5.450	0,85%	68.192	10,63%	223.741	34,88%	641.461
2013	191.035	26,84%	29.484	4,14%	66.201	9,30%	21.276	2,99%	34.070	4,79%	926	0,13%	19.102	2,68%	4.781	0,67%	59.519	8,36%	285.383	40,09%	711.778
2014	224.455	29,17%	29.397	3,82%	77.002	10,01%	20.888	2,72%	34.032	4,42%	2.726	0,35%	13.753	1,79%	3.993	0,52%	45.832	5,96%	317.268	41,24%	769.346
2015	199.962	24,17%	71.160	8,60%	75.521	9,13%	19.829	2,40%	25.349	3,06%	1.432	0,17%	13.250	1,60%	4.535	0,55%	39.879	4,82%	376.504	45,50%	827.419
2016	170.244	19,64%	138.590	15,99%	88.063	10,16%	19.196	2,21%	35.559	4,10%	803	0,09%	3.355	0,39%	2.845	0,33%	22.983	2,65%	385.317	44,44%	866.956
2017	158.157	17,21%	195.502	21,28%	91.216	9,93%	15.308	1,67%	30.789	3,35%	770	0,08%	2.229	0,24%	1.717	0,19%	17.721	1,93%	405.350	44,12%	918.759
2018	156.954	16,27%	217.923	22,59%	94.859	9,83%	15.177	1,57%	29.467	3,05%	694	0,07%	1.266	0,13%	1.647	0,17%	14.157	1,47%	432.716	44,85%	964.860
2019	143.766	14,61%	212.598	21,61%	91.684	9,32%	12.733	1,29%	24.813	2,52%	763	0,08%	846	0,09%	1.421	0,14%	15.194	1,54%	480.094	48,79%	983.912
2020	165.244	15,22%	302.525	27,86%	90.866	8,37%	13.095	1,21%	22.247	2,05%	932	0,09%	761	0,07%	1.157	0,11%	11.676	1,08%	477.203	43,95%	1.085.707
2021	140.107	12,16%	386.948	33,58%	88.065	7,64%	11.281	0,98%	17.400	1,51%	1.028	0,09%	786	0,07%	1.007	0,09%	12.745	1,11%	492.906	42,78%	1.152.272
2022	169.832	13,74%	413.574	33,45%	89.047	7,20%	10.577	0,86%	29.283	2,37%	1.387	0,11%	2.966	0,24%	3.233	0,26%	18.637	1,51%	497.899	40,27%	1.236.435
2023																					
January	169.663	13,83%	407.835	33,24%	87.330	7,12%	10.644	0,87%	30.792	2,51%	1.580	0,13%	4.391	0,36%	5.136	0,42%	18.590	1,52%	491.074	40,02%	1.227.035
February	174.611	13,89%	409.679	32,58%	88.276	7,02%	10.970	0,87%	34.452	2,74%	1.704	0,14%	6.162	0,49%	9.185	0,73%	19.157	1,52%	503.105	40,01%	1.257.301
March	177.583	13,96%	413.125	32,48%	89.086	7,00%	9.894	0,78%	36.297	2,85%	1.805	0,14%	7.076	0,56%	12.499	0,98%	20.872	1,64%	503.799	39,61%	1.272.036
April	170.675	13,51%	410.408	32,47%	89.923	7,12%	9.361	0,74%	36.794	2,91%	1.750	0,14%	7.470	0,59%	14.937	1,18%	20.699	1,64%	501.769	39,70%	1.263.786
May	168.278	13,17%	412.449	32,28%	90.921	7,12%	9.745	0,76%	39.239	3,07%	1.896	0,15%	7.841	0,61%	16.766	1,31%	21.364	1,67%	509.307	39,86%	1.277.805
June	168.870	12,96%	413.359	31,73%	91.618	7,03%	9.766	0,75%	39.487	3,03%	2.656	0,20%	7.695	0,59%	18.530	1,42%	20.805	1,60%	529.994	40,68%	1.302.782
July	166.193	12,83%	407.083	31,42%	92.250	7,12%	9.951	0,77%	41.378	3,19%	2.546	0,20%	7.790	0,60%	20.414	1,58%	21.153	1,63%	527.011	40,67%	1.295.769
August	164.355	12,62%	408.081	31,34%	92.518	7,10%	9.764	0,75%	41.687	3,20%	2.492	0,19%	7.986	0,61%	22.291	1,71%	21.258	1,63%	531.842	40,84%	1.302.273
September	171.206	12,99%	408.758	31,02%	93.154	7,07%	9.999	0,76%	43.293	3,29%	2.519	0,19%	7.791	0,59%	23.389	1,78%	21.358	1,62%	536.080	40,69%	1.317.548
October	170.148	12,95%	402.016	30,59%	92.908	7,07%	10.141	0,77%	43.174	3,29%	2.518	0,19%	7.717	0,59%	24.787	1,89%	21.676	1,65%	538.913	41,01%	1.313.999
November	170.471	12,91%	401.817	30,44%	93.727	7,10%	9.711	0,74%	42.461	3,22%	2.440	0,18%	7.744	0,59%	26.060	1,97%	22.016	1,67%	543.663	41,18%	1.320.112
December	168.406	12,73%	402.203	30,40%	94.851	7,17%	9.547	0,72%	42.289	3,20%	2.459	0,19%	6.930	0,52%	26.574	2,01%	22.138	1,67%	547.803	41,40%	1.323.201
2024																					
January	168.426	12,62%	396.099	29,69%	93.617	7,02%	9.920	0,74%	40.979	3,07%	2.405	0,18%	6.783	0,51%	26.860	2,01%	22.481	1,68%	566.662	42,47%	1.334.232
February	171.904	12,71%	397.820	29,41%	95.622	7,07%	10.139	0,75%	42.435	3,14%	2.422	0,18%	7.362	0,54%	26.947	1,99%	22.975	1,70%	574.972	42,51%	1.352.598
March	175.077	12,79%	399.329	29,17%	96.324	7,04%	9.158	0,67%	43.013	3,14%	2.593	0,19%	7.508	0,55%	28.364	2,07%	28.230	2,06%	579.163	42,31%	1.368.759

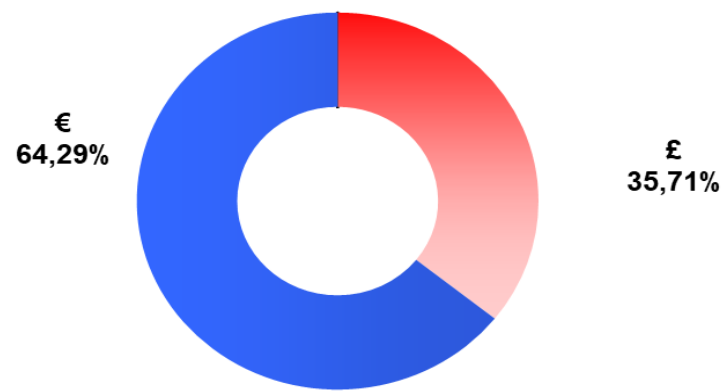
Source: 2002-2015 Bank of Spain (Obtained using Iberclear data), 2016-2023 Bank or Spain (Obtained using Securities Holdings Statistics data).
Due to the changes in the source of the data the series present a break in 2016.

FOREIGN CURRENCY DENOMINATED DEBT (As at 05.31.2024)

Pre-swaps



Post-swaps



GOVERNMENT FUNDING EVOLUTION IN 2024

(euro billion)

	Data as at 31 st May	2024 Annual forecast
Government Debt net financing	28,00	55,00
Treasury Bills	0,73	0,00
Government Bonds	27,05	59,98
Other Debt and Foreign-currency Debt	0,22	-4,98

CENTRAL GOVERNMENT NATIONAL CURRENCY DEBT: YIELDS OF NEW ISSUES*

(%)

DATE	SHORT TERM ISSUES					OTHER DEBTS	LONG TERM ISSUES					OTHER DEBTS	AVERAGE YIELD*	Inflation linked T-Bonds	Memorandum Items (E.Inflation)**
	T-BILLS						T-BONDS								
	3 months	6 months	9 months	12 months	18 months		2 years	3 years	5-7 years	10 years	15 years				
2002	3,370			3,411	3,567		4,039	4,243	5,061	5,488	5,264		4,171		4,171
2003	2,130	2,113		2,253	2,346		2,727	3,150	4,170	4,455	4,921		2,942		2,942
2004	2,027	2,036		2,151	2,315		2,830	3,263	4,177	4,215	4,709		2,936		2,936
2005	2,063	2,141		2,192	2,293		2,376	2,921	3,397	3,698	4,152		2,801		2,801
2006				3,250	3,377		3,221	3,571	3,807		4,005		3,472		3,472
2007		4,073		4,113	3,902		3,989	4,113	4,272		4,774		4,198		4,198
2008	2,603	2,700		3,680			2,821	3,686	4,153	4,305	4,920		3,815		3,815
2009	0,654	0,749		1,031				2,115	3,088	4,258	4,424		2,148		2,148
2010	0,919	1,187		1,663	1,915			2,750	3,074	4,464	4,788	2,874	2,554		2,554
2011	2,003	2,423		3,158	3,493		4,293	4,096	4,643	5,571	5,994	5,945	5,666	3,897	3,897
2012	1,251	1,979		2,809	2,925		3,695	3,794	4,527	5,448		6,152	0,325	2,919	2,919
2013	0,420	0,787	0,981	1,225	1,717		2,473	2,524	3,408	4,773	4,978	5,290	1,533	2,452	2,452
2014	0,176	0,266	0,361	0,421				1,014	1,788	2,877	3,767	3,947	1,962	1,463	1,519
2015	-0,069	0,017	0,033	0,080				0,349	0,871	1,820	2,053	2,732		0,807	0,403
2016	-0,341	-0,179	-0,169	-0,143				0,087	0,492	1,513	1,764	2,800	0,871	0,599	0,028
2017	-0,461	-0,394	-0,369	-0,339				-0,032	0,411	1,534	2,104	2,817	-0,004	0,560	0,326
2018	-0,522	-0,441	-0,388	-0,366				0,006	0,418	1,423	1,964	2,582	0,615	0,594	-0,100
2019	-0,517	-0,454	-0,437	-0,404				-0,251	0,069	0,861	1,264	1,562	0,329	0,195	-0,051
2020	-0,521	-0,406	-0,374	-0,349		-0,382		-0,150	0,181	0,719	0,835	1,238	-0,153	0,172	-0,510
2021	-0,629	-0,585	-0,559	-0,547				-0,439	-0,138	0,343	0,799	1,164	0,139	-0,052	-1,020
2022	-0,035	0,240	0,629	0,617				1,117	1,549	1,901	2,036	2,735		1,327	-0,461
2023	3,172	3,374	3,422	3,413			3,056	3,173	3,183	3,497	3,832	3,957		3,425	1,386
January	2,206	2,606	2,847	2,990				2,809	2,740		3,207	3,431		2,880	1,022
February	2,529	2,701	2,966	2,824				2,924	3,074	3,212	3,902	3,652		3,209	0,881
March	2,674	3,162	3,039	3,313				3,437	3,189	3,577		3,814		3,369	1,169
April	2,958	3,018	3,191	3,141				3,009	3,262	3,466	3,805	3,929		3,329	1,059
May	3,109	3,159	3,231	3,224			3,056	2,931	3,003		3,755	3,997		3,251	0,659
June	3,297	3,404	3,486	3,455				3,147	3,127	3,556	3,844	3,981		3,471	1,136
July	3,557	3,637	3,815	3,786				3,307	3,241	3,557	3,729	3,821		3,599	1,099
August	3,563	3,683	3,710	3,674				3,244	3,286	3,609				3,553	0,872
September	3,508	3,696	3,747	3,674				3,430	3,428	3,639		4,190		3,643	1,029
October	3,614	3,859	3,829	3,870				3,513	3,661	4,033	4,483			3,853	2,082
November	3,608	3,757	3,711	3,616				3,247	3,337	3,601		4,292		3,732	1,540
December	3,641	3,650	3,511	3,316					2,834		3,591			3,392	1,203
2024	3,664	3,657	3,510	3,405				2,836	2,854	3,187	3,593	3,878	3,593	3,272	1,219
January	3,563	3,629	3,500	3,300				2,694	2,783	3,259	3,633	3,695	3,593	3,200	0,834
February	3,770	3,698	3,503	3,349				2,878	2,818	3,159		4,002		3,348	1,522
March	3,684	3,737	3,579	3,510				2,899	2,859	3,049		3,651		3,247	1,383
April	3,659	3,655	3,529	3,436				2,989	2,892	3,222	3,533	3,868		3,315	1,331
May	3,649	3,575	3,447	3,415				2,961	2,937	3,103	3,591			3,298	1,044

(*) Loans included.

(**) Inflation implied in swaps market when issuing each Bond

CENTRAL GOVERNMENT DEBT: AUCTIONS 2024

(Currency : Euro)

DATE	SHORT TERM ISSUES						LONG TERM ISSUES						
	ASSET AND MATURITY*	NOMINAL VALUE (mill.)			YIELD (%)		ASSET AND MATURITY*	NOMINAL VALUE (mill.)			COUPON(%)	YIELD (%)	
		OFFERED		ALLOTTED	STOP OUT RATE	AVERAGE		OFFERED		ALLOTTED		MARGINAL	AVERAGE
		1st ROUND	2nd ROUND					1st ROUND	2nd ROUND				
04/01							B-3y	3.694		2.679	2,500	2,592	2,582
							O€i-4y	1.564		599	0,650	0,836	0,830
							B-5y	3.586		2.156	3,500	2,628	2,621
							O-30y	2.518		1.458	1,900	3,698	3,693
09/01	L-6m	2.573		1.037	3,635	3,580							
	L-12m	6.151		4.019	3,314	3,293							
10/01							O-10y (s)	140.492		15.000	3,250	3,259	3,259
16/01	L-3m	1.658		502	3,538	3,506							
	L-9m	2.916		1.495	3,492	3,478							
18/01							B-3y	3.743	395	2.688	2,500	2,811	2,799
							O-7y	2.924	334	1.983	1,250	2,961	2,954
							O-15y	3.383	488	2.811	3,900	3,637	3,630
01/02							O-5y	2.897		1.751	1,450	2,698	2,690
							O-7y	2.490		1.775	0,100	2,880	2,868
							O-10y	4.448		2.527	3,250	3,173	3,170
							O€i-15y	946		516	2,050	1,530	1,518
06/02	L-6m	2.650	27	1.012	3,688	3,653	O-30y (s)	83.748		6.000	4,000	4,002	4,002
	L-12m	6.585	35	4.085	3,359	3,342							
13/02	L-3m	2.211		441	3,740	3,703							
	L-9m	4.051	51	1.646	3,504	3,483							
15/02							B-3y	3.212		1.862	2,500	2,883	2,875
							B-5y	3.566		2.186	3,500	2,879	2,873
							O-10y	3.428		1.848	2,350	3,144	3,139
05/03	L-6m	3.102	38	1.270	3,715	3,702							
	L-12m	6.546	746	4.632	3,516	3,508							
07/03							B-5y	3.059	370	2.078	3,500	2,862	2,857
							O-8y	4.225	410	2.459	0,500	2,970	2,965
							O-10y	5.104	480	2.780	3,250	3,166	3,162
							O€i-15y	1.200	103	614	2,050	1,385	1,381

CENTRAL GOVERNMENT DEBT: AUCTIONS 2024

(Currency : Euro)

DATE	SHORT TERM ISSUES						LONG TERM ISSUES						
	ASSET AND MATURITY*	NOMINAL VALUE (mill.)			YIELD (%)		ASSET AND MATURITY*	NOMINAL VALUE (mill.)			COUPON(%)	YIELD (%)	
		OFFERED		ALLOTTED	STOP OUT RATE	AVERAGE		OFFERED		ALLOTTED		MARGINAL	AVERAGE
		1st ROUND	2nd ROUND					1st ROUND	2nd ROUND				
12/03	L-3m	1.867	24	561	3,653	3,626							
	L-9m	2.941	51	1.506	3,578	3,555							
21/03							B-3y	6.721	615	3.515	2,500	2,899	2,896
							O-8y	2.635	318	1.778	5,750	2,987	2,976
							O-20y	3.241	361	2.067	3,450	3,652	3,650
04/04							B-5y	3.776		2.186	3,500	2,853	2,848
							O-10y	3.857		2.132	3,250	3,196	3,191
							O-15y	2.725		1.745	3,900	2,536	2,531
							O€i-15y	1.022		506	2,050	1,335	1,329
09/04	L-6m	3.413	166	1.477	3,623	3,621							
	L-12m	6.916		3.922	3,449	3,423							
16/04	L-3m	2.040	11	502	3,632	3,597							
	L-9m	3.420	58	1.618	3,519	3,507							
18/04							B-3y	3.780		1.500	2,500	2,992	2,986
							O-6y	3.128		1.533	1,950	2,956	2,950
							O-10y	3.825		2.075	3,250	3,255	3,251
							O->30y	1.825		1.035	3,450	3,876	3,865
07/05	L-6m	3.082		1.374	3,554	3,543							
	L-12m	6.611		4.080	3,424	3,405							
09/05							B-5y	3.803		2.408	3,500	2,981	2,974
							O-8y	3.148	25	1.482	0,700	3,106	3,100
							O-15y	3.818	190	2.101	3,900	3,618	3,611
14/05	L-3m	1.682	16	363	3,630	3,584	O€i-10y	1.240		470	0,700	1,049	1,042
	L-9m	3.294	101	1.664	3,439	3,427							
16/05							B-3y	4.170		1.850	2,500	2,965	2,959
							B-5y	4.144		1.750	3,500	2,883	2,877
							O(GB)-18y	2.687		1.897	1,000	3,569	3,562

(*) L: T-Bills; B & O: T-Bonds; B€i & O€i: Inflation linked bonds; (GB): Green Bonds; P: Loans, and C: exchange of bonds.

(s): Syndication; (v): Floating interest rate.

CENTRAL GOVERNMENT DEBT: AUCTIONS 2023

(Currency : Euro)

DATE	SHORT TERM ISSUES						LONG TERM ISSUES						
	ASSET AND MATURITY*	NOMINAL VALUE (mill.)			YIELD (%)		ASSET AND MATURITY*	NOMINAL VALUE (mill.)			COUPON(%)	YIELD (%)	
		OFFERED		ALLOTTED	STOP OUT RATE	AVERAGE		OFFERED		MARGINAL		AVERAGE	
		1st ROUND	2nd ROUND					1st ROUND	2nd ROUND				
10/01	L-6m	2.716	153	1.124	2,599	2,584							
	L-12m	7.078	797	4.721	2,998	2,983							
12/01							B-3y	5.169		2.864	2,800	2,816	2,805
							O-7y	4.564		2.088	0,800	2,897	2,889
							O€i-15y	1.064		507	0,700	1,032	1,018
							O-23y	2.330		1.475	2,900	3,439	3,426
17/01	L-3m	2.025	33	553	2,198	2,182							
	L-9m	5.798	306	1.839	2,839	2,830							
19/01							O-5y	4.362		2.345	0,000	2,633	2,623
							O-7y	2.706		1.591	0,500	2,723	2,701
							O-18y	2.121		1.401	4,900	3,220	3,203
01/02							O-10y (s)	86.133		13.000	3,150	3,177	3,177
02/02							B-3y	5.580	527	2.927	2,800	2,928	2,919
							O-5y	3.376	355	1.966	1,400	2,896	2,887
							O€i-8y	1.080	106	612	1,000	0,886	0,876
							O-20y	3.658	31	2.014	3,450	3,654	3,649
07/02	L-6m	2.327		1.063	2,693	2,675							
	L-12m	7.864		4.000	2,839	2,813							
14/02	L-3m	2.204		509	2,520	2,494							
	L-9m	4.161		1.450	2,973	2,938							
16/02							O-5y	2.666	27	1.379	0,800	3,087	3,069
							O-7y	4.580	56	2.656	0,800	3,212	3,206
							O-10y	3.720	390	2.422	2,550	3,407	3,399
21/02							O-15y (s)	30.586		5.000	3,900	3,902	3,902
02/03							B-3y	4.329	437	2.577	2,800	3,441	3,433
							O-7y	2.770	295	1.770	0,800	3,527	3,520
							O-10y	4.374	475	2.839	3,150	3,773	3,765
							O€i-15y	977	96	598	0,700	1,176	1,164

CENTRAL GOVERNMENT DEBT: AUCTIONS 2023

(Currency : Euro)

DATE	SHORT TERM ISSUES						LONG TERM ISSUES						
	ASSET AND MATURITY*	NOMINAL VALUE (mill.)			YIELD (%)		ASSET AND MATURITY*	NOMINAL VALUE (mill.)			COUPON(%)	YIELD (%)	
		OFFERED		ALLOTED	STOP OUT RATE	AVERAGE		OFFERED		ALLOTED		MARGINAL	AVERAGE
		1st ROUND	2nd ROUND					1st ROUND	2nd ROUND				
07/03	L-6m	2.720		904	3,164	3,114							
	L-12m	5.975		4.035	3,335	3,295							
14/03	L-3m	1.749	40	594	2,670	2,638							
	L-9m	4.351	255	1.555	3,034	3,021							
16/03							O-5y	4.020	481	2.961	0,000	2,993	2,983
							O-10y	3.441	436	2.601	3,150	3,376	3,361
							O-30y	2.608	325	1.978	1,900	3,821	3,810
11/04	L-6m	2.948	7	810	3,005	2,994							
	L-12m	5.299		4.037	3,169	3,128							
13/04							B-3y	3.286		2.506	2,800	3,022	3,004
							O-10y	3.500		2.540	3,150	3,416	3,401
							O€i-15y	934		479	0,700	1,065	1,055
							O(GB)-18y	2.206		1.441	1,000	3,812	3,802
18/04	L-3m	1.984	15	479	2,940	2,917							
	L-9m	3.383		1.522	3,199	3,169							
20/04							O-7y	3.428	303	2.579	0,800	3,272	3,257
							O-10y	3.812	516	3.272	3,150	3,520	3,509
							O-28y	1.793	80	1.472	2,700	3,940	3,926
04/05							B-3y	3.983	172	2.603	2,800	2,949	2,941
							O-5y	3.339		2.174	0,000	2,937	2,922
							O€i-10y	1.124	93	652	0,650	0,671	0,652
							O-18y	2.237		1.772	1,200	3,770	3,751
09/05	L-6m	3.306		900	3,143	3,129							
	L-12m	5.505		3.854	3,247	3,216							
16/05	L-3m	1.906	20	421	3,090	3,061							
	L-9m	4.313	24	1.620	3,222	3,212							

CENTRAL GOVERNMENT DEBT: AUCTIONS 2023

(Currency : Euro)

DATE	SHORT TERM ISSUES						LONG TERM ISSUES						
	ASSET AND MATURITY*	NOMINAL VALUE (mill.)			YIELD (%)		ASSET AND MATURITY*	NOMINAL VALUE (mill.)			COUPON(%)	YIELD (%)	
		OFFERED		ALLOTTED	STOP OUT RATE	AVERAGE		OFFERED		ALLOTTED		MARGINAL	AVERAGE
		1st ROUND	2nd ROUND					1st ROUND	2nd ROUND				
18/05							B-2y	2.918	290	1.893	0,000	3,071	3,046
							B-5y	2.242	38	1.345	0,000	3,043	3,027
							O-5y	2.452	4	1.486	1,400	3,097	3,086
							O-20y	2.619	323	2.442	3,450	4,007	3,991
01/06							B-3y	4.482		2.207	2,800	3,058	3,049
							O-7y	3.766		2.076	0,800	3,082	3,076
							O€i-15y	924	96	610	0,700	1,141	1,131
							O-30y	3.003	258	1.995	1,900	3,985	3,978
06/06	L-6m	3.240		979	3,392	3,372							
	L-12m	6.076	192	4.178	3,468	3,445							
07/06							O-10y (s)	85.134		13.000	3,550	3,556	3,556
13/06	L-3m	2.112		530	3,263	3,255							
	L-9m	3.231		1.540	3,490	3,462							
15/06							B-3y	4.022		2.032	2,800	3,260	3,246
							O-5y	2.518	285	1.623	5,150	3,197	3,184
							O-15y	2.891	333	1.914	3,900	3,847	3,842
04/07	L-6m	2.616		1.031	3,629	3,599							
	L-12m	5.513	595	4.833	3,804	3,775							
06/07							O-7y	3.051		2.126	0,800	3,343	3,330
							O-10y	4.116		2.790	3,550	3,562	3,554
							O€i-10y	861		526	0,650	1,111	1,092
							O->30y	1.991		1.586	1,450	3,904	3,874
11/07	L-3m	1.855		459	3,531	3,500							
	L-9m	2.876	204	1.725	3,810	3,788							
20/07							B-3y	3.636	339	2.025	2,800	3,310	3,303
							O-5y	2.662	331	2.007	1,400	3,151	3,137
							O-15y	2.226	10	1.586	3,900	3,739	3,726
							O-28y	2.579	9	1.511	1,000	3,762	3,755

CENTRAL GOVERNMENT DEBT: AUCTIONS 2023

(Currency : Euro)

DATE	SHORT TERM ISSUES						LONG TERM ISSUES						
	ASSET AND MATURITY*	NOMINAL VALUE (mill.)			YIELD (%)		ASSET AND MATURITY*	NOMINAL VALUE (mill.)			COUPON(%)	YIELD (%)	
		OFFERED		ALLOTTED	STOP OUT RATE	AVERAGE		OFFERED		ALLOTTED		MARGINAL	AVERAGE
		1st ROUND	2nd ROUND					1st ROUND	2nd ROUND				
03/08							O-4y	3.262	253	2.171	1,500	3,251	3,238
							O-6y	2.528		1.553	0,600	3,295	3,281
							O-10y	3.403		2.252	3,550	3,613	3,605
							O€i-10y	1.058	98	633	0,650	0,879	0,866
08/08	L-6m	2.734	152	1.156	3,665	3,639							
	L-12m	6.631	803	4.638	3,682	3,664							
16/08	L-3m	1.889		523	3,535	3,507							
	L-9m	3.463		1.525	3,700	3,687							
05/09	L-6m	2.775		1.125	3,679	3,654							
	L-12m	6.213		3.816	3,680	3,670							
07/09							O-3y	3.468	387	2.331	1,300	3,315	3,304
							O€i-7y	928	78	561	1,000	1,035	1,025
							O-10y	4.488	373	2.971	3,550	3,668	3,663
							O-30y	3.710	390	2.292	1,900	4,193	4,187
12/09	L-3m	2.231		550	3,490	3,452							
	L-9m	3.428		1.763	3,737	3,724							
21/09							B-3y	4.278	244	2.831	2,800	3,533	3,527
							O-5y	4.368		1.983	0,000	3,430	3,426
							O-8y	2.963		1.733	0,500	3,598	3,591
03/10	L-6m	2.818	27	1.065	3,830	3,823							
	L-12m	6.340	728	4.263	3,876	3,862							
05/10							B-5y	6.145	761	4.311	3,500	3,650	3,644
							O-10y	2.999	279	1.567	2,350	3,985	3,980
							O(GB)-18y	2.494	320	1.924	1,000	4,486	4,479
17/10	L-3m	2.130		559	3,590	3,556	O€i-15y (s)	29.325		3.000	2,050	2,082	2,082
	L-9m	3.269		1.478	3,818	3,802							
19/10							O-2y	2.756	217	1.243	2,150	3,521	3,508
							O-7y	4.256	472	2.693	0,800	3,683	3,679
							O-10y	3.579	360	2.028	3,550	4,074	4,067

CENTRAL GOVERNMENT DEBT: AUCTIONS 2023

(Currency : Euro)

DATE	SHORT TERM ISSUES						LONG TERM ISSUES						
	ASSET AND MATURITY*	NOMINAL VALUE (mill.)			YIELD (%)		ASSET AND MATURITY*	NOMINAL VALUE (mill.)			COUPON(%)	YIELD (%)	
		OFFERED		ALLOTTED	STOP OUT RATE	AVERAGE		OFFERED		ALLOTTED		MARGINAL	AVERAGE
		1st ROUND	2nd ROUND					1st ROUND	2nd ROUND				
02/11							B-5y	4.495	53	2.453	3,500	3,339	3,334
							O-8y	2.663	286	1.624	0,700	3,589	3,582
							O€i-10y	824	99	578	0,700	1,550	1,533
							O-30y	2.296	361	2.027	1,900	4,473	4,465
07/11	L-6m	2.736	40	1.043	3,747	3,709							
	L-12m	6.520	484	3.753	3,630	3,606							
14/11	L-3m	1.687	5	507	3,580	3,552							
	L-9m	3.270	85	1.559	3,705	3,686							
16/11							B-3y	4.093	166	1.013	2,800	3,249	3,245
							O-10y	3.398	301	1.879	3,550	3,616	3,610
							O-20y	2.580	374	2.298	3,450	4,139	4,132
05/12	L-6m	2.777		1.160	3,620	3,617							
	L-12m	5.433	413	3.231	3,327	3,305							
07/12							O-6y	2.608		1.198	0,600	2,838	2,831
							O€i-10y	890		505	0,700	1,213	1,199
							O-15y	3.000		1.727	3,900	3,593	3,589
12/12	L-3m	1.644	2	400	3,620	3,580							
	L-9m	3.274	118	1.461	3,510	3,485							

(*) L: T-Bills; B & O: T-Bonds; B€i & O€i: Inflation linked bonds; (GB): Green Bonds; P: Loans, and C: exchange of bonds.

(s): Syndication; (v): Floating interest rate.

TREASURY BILLS AUCTIONS: MARGINAL INTEREST RATES

(%)

DATE	3 MONTHS				6 MONTHS				9 MONTHS				12 MONTHS				18 MONTHS			
	Medium*	Higher	Lower	Last	Medium*	Higher	Lower	Last	Medium*	Higher	Lower	Last	Medium*	Higher	Lower	Last	Medium*	Higher	Lower	Last
2002													3,479	3,880	2,872	2,872	3,670	4,140	2,942	2,964
2003	2,142	2,413	1,993	2,052	2,129	2,361	1,913	2,134					2,237	2,634	1,853	2,385	2,353	2,685	1,897	2,652
2004	2,012	2,065	1,952	2,065	2,017	2,085	1,935	2,085					2,144	2,285	1,945	2,160	2,309	2,529	2,035	2,235
2005	2,050	2,050	2,050	2,050	2,134	2,499	2,002	2,499					2,204	2,690	1,996	2,690	2,296	2,805	2,040	2,805
2006													3,264	3,775	2,624	3,775	3,376	3,825	2,719	3,825
2007					4,044	4,170	3,985	4,015					4,106	4,425	3,842	4,114	3,905	3,905	3,905	3,905
2008	2,643	3,250	2,080	2,080	2,908	3,928	2,195	2,195					3,776	4,669	2,235	2,235				
2009	0,716	1,325	0,355	0,420	0,827	1,475	0,450	0,528					1,043	1,450	0,729	0,953				
2010	0,836	1,870	0,334	1,848	1,238	2,650	0,483	2,650					1,798	3,520	0,848	3,520	2,168	3,790	1,160	3,790
2011	1,835	5,220	0,929	1,880	2,425	5,328	1,378	2,530					3,303	5,200	2,178	4,088	3,644	5,320	2,500	4,250
2012	1,267	2,650	0,428	1,273	2,016	3,950	0,780	1,688					2,929	5,200	1,473	2,650	3,216	5,350	1,770	2,888
2013	0,419	0,900	0,150	0,670	0,766	0,968	0,500	0,710	0,992	1,490	0,685	0,872	1,250	1,580	0,713	0,905	1,790	1,790	1,790	1,790
2014	0,185	0,350	0,040	0,209	0,272	0,525	0,090	0,285	0,378	0,670	0,115	0,382	0,432	0,740	0,169	0,369				
2015	-0,056	0,030	-0,225	-0,160	0,021	0,135	-0,094	-0,061	0,036	0,143	-0,071	-0,002	0,079	0,275	-0,046	-0,016				
2016	-0,326	-0,138	-0,530	-0,530	-0,206	-0,052	-0,325	-0,320	-0,176	-0,014	-0,296	-0,289	-0,138	0,005	-0,245	-0,221				
2017	-0,455	-0,402	-0,592	-0,592	-0,389	-0,360	-0,433	-0,402	-0,365	-0,326	-0,411	-0,411	-0,336	-0,287	-0,391	-0,368				
2018	-0,528	-0,460	-0,636	-0,500	-0,437	-0,396	-0,478	-0,398	-0,399	-0,307	-0,469	-0,371	-0,362	-0,281	-0,415	-0,312				
2019	-0,499	-0,403	-0,592	-0,580	-0,443	-0,371	-0,558	-0,443	-0,428	-0,355	-0,544	-0,460	-0,401	-0,304	-0,515	-0,448				
2020	-0,528	-0,290	-0,821	-0,821	-0,439	-0,010	-0,596	-0,596	-0,435	0,039	-0,653	-0,653	-0,390	0,160	-0,610	-0,610				
2021	-0,619	-0,550	-0,757	-0,690	-0,580	-0,516	-0,662	-0,662	-0,556	-0,509	-0,623	-0,558	-0,546	-0,498	-0,626	-0,595				
2022	0,102	1,645	-0,678	1,645	0,389	2,092	-0,566	2,092	0,653	2,387	-0,557	2,380	0,747	2,565	-0,515	2,474				
2023	3,169	3,620	2,198	3,620	3,347	3,830	2,599	3,620	3,420	3,818	2,839	3,510	3,421	3,876	2,839	3,327				
January				2,198				2,599				2,839				2,998				
February				2,520				2,693				2,973				2,839				
March				2,670				3,164				3,034				3,335				
April				2,940				3,005				3,199				3,169				
May				3,090				3,143				3,222				3,247				
June				3,263				3,392				3,490				3,468				
July				3,531				3,629				3,810				3,804				
August				3,535				3,665				3,700				3,682				
September				3,490				3,679				3,737				3,680				
October				3,590				3,830				3,818				3,876				
November				3,580				3,747				3,705				3,630				
December				3,620				3,620				3,510				3,327				
2024	3,639	3,740	3,538	3,630	3,643	3,715	3,554	3,554	3,506	3,578	3,439	3,439	3,412	3,516	3,314	3,424				
January				3,538				3,635				3,492				3,314				
February				3,740				3,688				3,504				3,359				
March				3,653				3,715				3,578				3,516				
April				3,632				3,623				3,519				3,449				
May				3,630				3,554				3,439				3,424				

* Simple arithmetic average

CENTRAL GOVERNMENT BONDS AUCTIONS: MARGINAL INTEREST RATES

(%)

DATE	2-YEAR BONDS				3-YEAR BONDS				5-YEAR BONDS				10-YEAR BONDS				15-YEAR BONDS				30-50 YEAR BONDS			
	Medium*	Medium*	Lower	Last	Medium*	Higher	Lower	Last	Medium*	Higher	Lower	Last	Medium*	Higher	Lower	Last	Medium*	Higher	Lower	Last	Medium*	Higher	Lower	Last
2002					4,059	4,363	3,604	3,604	4,399	4,893	3,827	3,827	4,979	5,404	4,514	4,514	5,316	5,556	5,025	5,025	5,214	5,389	5,039	5,039
2003					2,665	3,020	2,218	2,404	3,190	3,544	2,854	3,522	4,134	4,404	3,745	4,404	4,457	4,574	4,369	4,408	4,904	5,066	4,698	5,054
2004					2,790	3,147	2,457	2,633	3,216	3,533	2,856	2,856	4,022	4,439	3,564	3,564	4,272	4,627	3,711	3,711	4,735	4,914	4,411	4,411
2005					2,379	2,622	2,142	2,622	2,887	3,067	2,644	3,027	3,439	3,681	3,170	3,475	3,702	3,702	3,702	3,702	3,981	4,257	3,765	3,765
2006					3,355	3,680	2,932	3,653	3,574	3,692	3,271	3,658	3,783	4,054	3,313	3,856					4,038	4,270	3,811	4,034
2007					4,000	4,049	3,951	4,049	4,160	4,489	3,949	4,197	4,243	4,649	3,956	4,263					4,626	4,922	4,254	4,702
2008	2,772	2,839	2,704	2,839	3,933	4,956	2,954	2,954	4,102	4,862	3,347	3,347	4,474	4,841	3,958	3,958	4,920	4,920	4,920	4,920	4,664	5,117	4,194	4,194
2009	1,990	2,450	1,529	1,529	2,382	3,099	2,051	2,151	3,047	3,503	2,763	2,763	4,146	4,652	3,879	3,896	4,451	4,528	4,263	4,263	4,809	4,923	4,716	4,716
2010					2,790	3,797	2,030	3,797	3,267	3,727	2,842	3,601	4,513	5,485	3,864	5,485	4,959	5,986	4,444	5,986	5,219	5,937	4,768	5,498
2011	4,363	4,363	4,363	4,363	4,118	5,203	3,297	5,203	4,702	5,560	4,080	5,560	5,658	7,088	5,179	5,564	6,091	6,218	6,012	6,218	5,959	6,011	5,891	6,011
2012	3,915	5,302	2,213	3,391	3,719	5,510	2,518	3,161	4,613	6,543	3,478	4,083	5,830	6,706	5,322	5,322								
2013	2,456	2,889	1,928	1,928	2,555	3,046	2,081	2,203	3,386	4,169	2,722	2,722	4,678	5,403	4,121	4,121	4,901	5,569	4,354	4,829	5,457	5,705	5,213	5,213
2014					1,011	1,620	0,581	0,595	1,610	2,411	0,896	0,896	2,714	3,845	1,752	1,752	3,745	4,223	2,909	2,909	4,054	4,541	3,604	3,604
2015					0,373	0,706	0,132	0,132	0,842	1,306	0,402	0,670	1,823	2,379	1,050	1,477	2,262	2,642	1,981	2,019	2,678	3,227	2,081	2,895
2016					0,071	0,303	-0,116	0,001	0,392	0,702	0,104	0,226	1,458	1,986	1,052	1,434	1,871	2,330	1,463	1,571	2,714	3,493	2,123	2,699
2017					-0,048	0,074	-0,229	0,000	0,382	0,568	0,223	0,301	1,569	1,739	1,406	1,492	2,154	2,392	1,942	1,947	3,006	3,256	2,774	3,195
2018					-0,036	0,141	-0,219	0,027	0,402	0,627	0,208	0,421	1,450	1,649	1,176	1,465	1,951	2,134	1,735	2,134	2,690	3,036	2,243	3,036
2019					-0,251	-0,028	-0,452	-0,430	-0,020	0,337	-0,316	-0,064	0,701	1,462	0,132	0,449	1,289	1,864	0,658	0,705	1,553	2,367	1,018	1,332
2020					-0,165	0,282	-0,437	-0,437	-0,079	0,419	-0,395	-0,395	0,473	1,306	-0,016	-0,016	0,872	1,202	0,642	0,642	1,370	1,701	1,071	1,315
2021					-0,443	-0,348	-0,536	-0,511	-0,277	-0,079	-0,427	-0,107	0,370	0,607	0,114	0,395	0,759	0,979	0,383	0,949	1,291	1,458	0,865	1,411
2022					1,113	2,679	-0,383	2,359	1,596	2,677	0,093	2,418	2,096	3,313	0,753	2,909	2,129	3,273	1,046	3,151	2,839	3,346	1,903	3,346
2023	3,296	3,521	3,071	3,521	3,171	3,533	2,816	3,249	3,121	3,650	2,633	3,339	3,596	4,074	3,177	3,616	3,770	3,902	3,593	3,593	4,075	4,473	3,821	4,473
January								2,816				2,633												
February								2,928	2,992	3,087	2,896	3,087	3,292	3,407	3,177	3,407				3,902				
March								3,441				2,993	3,575	3,773	3,376	3,376								3,821
April								3,022					3,468	3,520	3,416	3,520								
May				3,071				2,949	3,026	3,097	2,937	3,097												
June					3,159	3,260	3,058	3,260								3,556							3,847	3,985
July								3,310								3,562							3,739	3,904
August																3,613								
September					3,424	3,533	3,315	3,533				3,430				3,668								4,193
October				3,521								3,650	4,029	4,074	3,985	4,074								
November								3,249				3,339				3,616								4,473
December																				3,593				
2024					2,857	2,992	2,592	2,965	2,826	2,981	2,628	2,883	3,199	3,259	3,144	3,255	3,264	3,637	2,536	3,618	3,859	4,002	3,698	3,876
January					2,702	2,811	2,592	2,811				2,628				3,259				3,637				3,698
February								2,883	2,789	2,879	2,698	2,879	3,159	3,173	3,144	3,144								4,002
March								2,899				2,862				3,166								
April								2,992				2,853	3,226	3,255	3,196	3,255				2,536				3,876
May								2,965	2,932	2,981	2,883	2,883								3,618				

* Simple arithmetic average

CENTRAL GOVERNMENT BONDS AUCTIONS : MARGINAL INTEREST RATES

Inflation linked bonds

DATE	UP TO 4-YEAR BONDS €i				5-YEAR BONDS €i				6-9-YEAR BONDS €i				10-YEAR BONDS €i				11-14 YEAR BONDS €i				15-YEAR BONDS €i			
	Medium*	Higher	Lower	Last	Medium*	Higher	Lower	Last	Medium*	Higher	Lower	Last	Medium*	Higher	Lower	Last	Medium*	Higher	Lower	Last	Medium*	Higher	Lower	Last
2014					0,248	0,248	0,248	0,248					1,402	1,835	0,889	0,889								
2015					-0,088	0,187	-0,250	-0,200					0,776	1,220	0,331	0,331					0,970	1,585	0,354	1,585
2016	-0,393	-0,337	-0,449	-0,449	-0,254	-0,080	-0,594	-0,594					0,486	0,851	0,167	0,167					0,735	0,968	0,502	0,502
2017					-0,897	-0,633	-1,166	-1,166	-0,036	-0,036	-0,036	-0,036	0,337	0,733	0,125	0,261					0,809	0,880	0,696	0,880
2018	-1,285	-1,285	-1,285	-1,285	-1,009	-0,723	-1,551	-0,723					-0,141	0,017	-0,287	-0,154					0,414	0,565	0,250	0,565
2019					-1,035	-1,024	-1,046	-1,046					-0,567	-0,326	-0,807	-0,807	-0,140	0,271	-0,699	-0,699	0,505	0,753	0,257	0,257
2020					-0,762	-0,546	-0,978	-0,978					-0,787	-0,337	-1,135	-1,135					-0,285	0,411	-0,605	-0,374
2021									-1,311	-1,311	-1,311	-1,311	-1,191	-0,876	-1,376	-1,322	-0,896	-0,896	-0,896	-0,896	-0,912	-0,732	-1,058	-1,037
2022									0,441	0,702	0,020	0,601	-1,397	-0,945	-1,695	-0,945					-0,353	0,616	-1,020	0,616
2023									0,961	1,035	0,886	1,035	1,085	1,550	0,671	1,213					1,299	2,082	1,032	2,082
January																								1,032
February												0,886												
March																								1,176
April																								1,065
May																0,671								
June																								1,141
July																				1,111				
August																				0,879				
September												1,035												
October																								2,082
November																								
December																								
2024	0,836	0,836	0,836	0,836									1,049	1,049	1,049	1,049					1,417	1,530	1,335	1,335
January				0,836																				
February																								1,530
March																								1,385
April																								1,335
May																1,049								

%

* Simple arithmetic average

CENTRAL GOVERNMENT BONDS AUCTIONS : MARGINAL INTEREST RATES

Mem items: other tenors via reopenings

DATE	4-YEAR BONDS				6-9-YEAR BONDS				11-14-YEAR BONDS				16-28-YEAR BONDS			
	Medium*	Higher	Lower	Last	Medium*	Higher	Lower	Last	Medium*	Higher	Lower	Last	Medium*	Higher	Lower	Last
2009					3,781	3,840	3,721	3,721					4,881	4,958	4,804	4,804
2010													4,824	4,856	4,791	4,791
2011	4,311	5,280	3,662	4,058	5,167	5,371	4,998	5,239	5,695	5,695	5,695	5,695				
2012	4,662	6,059	3,428	3,999	5,176	6,798	4,242	4,729					6,147	6,366	5,928	5,928
2013					4,387	4,496	4,294	4,371	4,488	4,488	4,488	4,488	5,508	5,822	5,258	5,445
2014					1,937	2,139	1,588	1,588	3,787	4,012	3,561	3,561	3,497	3,529	3,465	3,465
2015					1,344	1,951	0,659	1,371	1,800	1,935	1,664	1,664	2,645	3,191	1,941	2,739
2016					1,171	1,276	1,071	1,071	1,262	1,262	1,262	1,262	2,380	2,666	1,783	2,586
2017	0,137	0,137	0,137	0,137	1,121	1,374	0,780	1,144	1,869	1,954	1,709	1,878	2,564	2,789	2,323	2,432
2018	0,302	0,322	0,281	0,322	0,936	1,086	0,713	0,861	1,785	1,978	1,591	1,978	2,328	2,692	2,189	2,432
2019					0,623	1,142	-0,087	-0,087	0,486	0,608	0,372	0,372	1,951	1,951	1,951	1,951
2020					0,218	0,842	-0,260	-0,260	0,849	0,849	0,849	0,849	0,897	1,251	0,614	0,614
2021	-0,390	-0,390	-0,390	-0,390	-0,031	0,188	-0,282	0,188					1,004	1,262	0,629	1,134
2022	1,701	2,700	1,075	2,700	1,744	3,258	0,129	2,669					2,677	3,601	1,218	3,307
2023	3,251	3,251	3,251	3,251	3,255	3,683	2,723	2,838					3,823	4,486	3,220	4,139
January					2,810	2,897	2,723	2,723					3,330	3,439	3,220	3,220
February								3,212								3,654
March								3,527								
April								3,272					3,876	3,940	3,812	3,940
May													3,889	4,007	3,770	4,007
June								3,082								
July								3,343								3,762
August				3,251				3,295								
September								3,598								
October								3,683								4,486
November								3,589								4,139
December								2,838								
2024					2,977	3,106	2,880	3,106					3,611	3,652	3,569	3,569
January								2,961								
February								2,880								
March					2,979	2,987	2,970	2,987								3,652
April								2,956								
May								3,106								3,569

* Simple arithmetic average

GOVERNMENT DEBT: NET FINANCING IN 2024
(acumulative net amounts)

(EURO million)

DATE	ISSUES												REDEMPTIONS					NET FINANCING					
	T-BILLS				T-BONDS								Other Debts	TOTAL	T-BONDS				OTHER AND ASSUMED DEBT	TOTAL			
	3-months	6-months	9-months	12-months	Up to 3-years	5-7-years	10-years	15-years	20-years and above	Inflation linked	Up to 5-years	10-years and above			Inflation linked	T-BILLS	Up to 5-years	10-years and above			Inflation linked		
January	498	1.019	1.459	3.890	5.337	3.939	14.988	2.811	1.004	599	340	35.884	7.636	17.457	91	25.183	-770	9.277	1.346	599	249	10.701	
February	935	2.012	3.064	7.841	7.183	9.250	19.269	2.811	7.002	1.115	340	60.824	14.745	17.457	91	32.293	-893	16.433	11.626	1.115	249	28.531	
March	1.491	3.259	4.531	12.314	10.675	11.328	25.883	2.811	9.058	1.729	340	83.420	21.652	17.457	116	39.225	-56	22.003	20.295	1.729	224	44.195	
April	1.989	4.710	6.109	16.104	12.165	14.982	30.090	4.556	10.030	2.234	340	103.309	28.784	38.606	116	67.506	128	27.146	6.069	2.234	224	35.802	
May																							
10	1.989	6.060	6.109	20.048	12.165	14.982	30.090	4.556	10.030	2.234	340	108.602	35.462	38.606	116	74.184	-1.256	27.146	6.069	2.234	224	34.418	
14	1.989	6.060	6.109	20.048	12.165	17.390	31.324	6.657	10.030	2.705	340	114.816	35.462	38.606	116	74.184	-1.256	29.554	9.405	2.705	224	40.632	
17	2.349	6.060	7.732	20.048	12.165	17.390	31.324	6.657	10.030	2.705	340	116.799	35.462	38.606	116	74.184	727	29.554	9.405	2.705	224	42.615	
21	2.349	6.060	7.732	20.048	14.007	19.140	31.324	7.926	10.030	2.705	340	121.660	35.462	38.606	116	74.184	727	33.147	10.674	2.705	224	47.476	
31	2.349	6.060	7.732	20.048	14.007	19.140	31.324	7.926	10.030	2.705	340	121.660	35.462	19.477	38.606	116	93.661	727	13.669	10.674	2.705	224	27.999
June													42.909	19.477	38.606	131	101.123						20.537
July													50.519	37.175	38.606	131	126.431						-4.771
August													57.862	37.175	38.606	131	133.774						-12.114
September													64.213	37.175	38.606	141	140.136						-18.476
October													71.226	37.175	62.793	202	171.396						-49.735
November													77.802	37.175	62.793	13.171	191.142						-69.482
December													82.395	37.175	62.793	13.171	200.513						-78.852
TOTAL YEAR													82.395	37.175	62.793	13.171	4.979	200.513					-78.852

GOVERNMENT DEBT: NET FINANCING IN 2023

(Net amounts)

(Euro million)

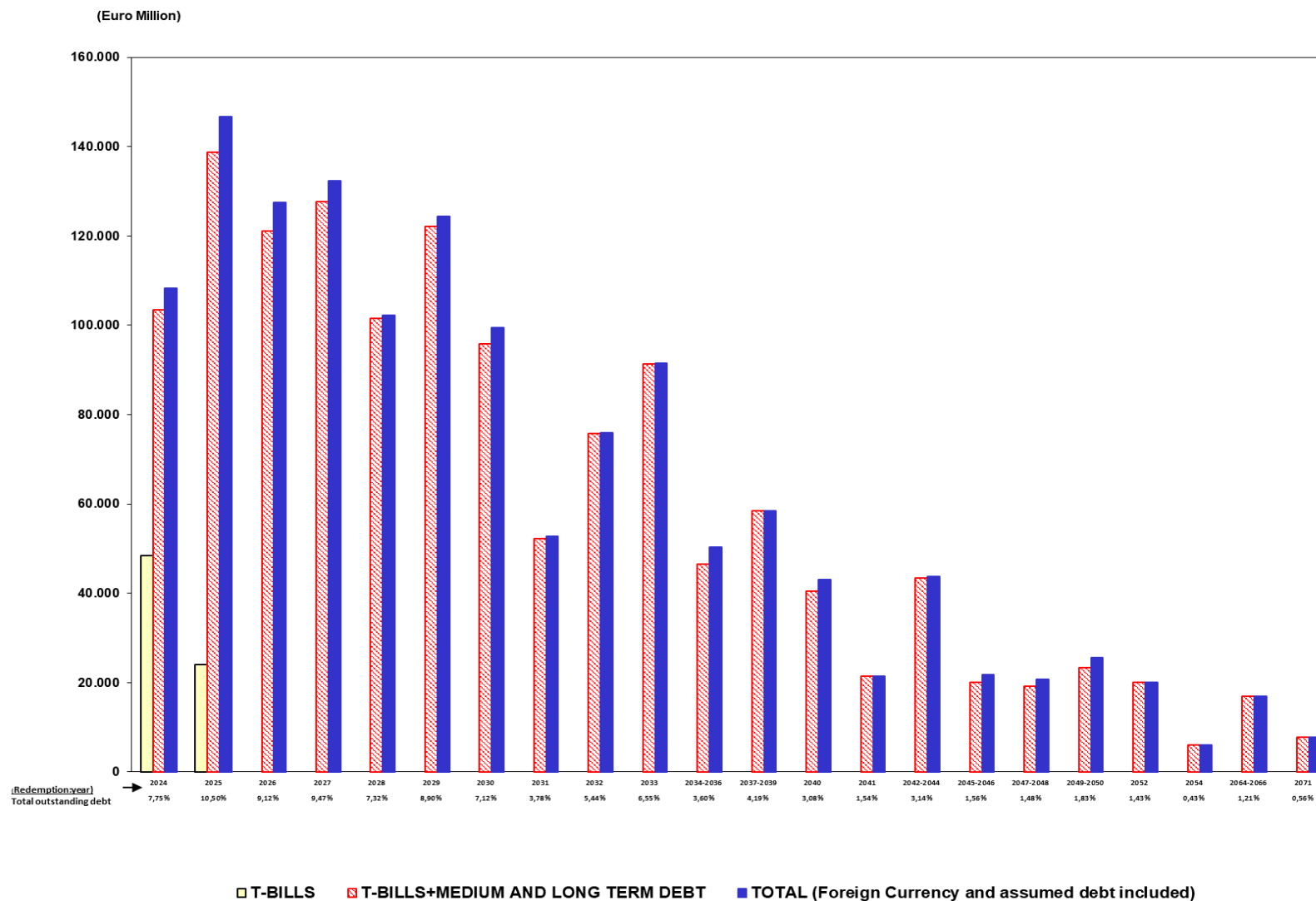
DATE	ISSUES											REDEMPTIONS					NET FINANCING							
	T-BILLS				T-BONDS							T-BILLS	T-BONDS			OTHER AND ASSUMED DEBT	TOTAL	T-BILLS	T-BONDS			OTHER AND ASSUMED DEBT	TOTAL	
	3-months	6-months	9-months	12-months	Up to 3-years	5-7-years	10-years	15-years	20-years and above	Inflation linked	Other Debts		TOTAL	Up to 5-years	10-years and above				Inflation linked	TOTAL	Up to 5-years			10-years and above
January	550	1.110	1.802	4.582	2.863	5.266		1.401	1.358	507		19.441	8.241		21.666		1.696	31.603	-197	8.130	-18.906	507	-1.696	-12.162
February	506	1.049	1.419	3.889	2.920	5.405	15.242	4.999	1.981	612		38.022	8.727					8.727	-1.864	8.325	22.222	612		29.294
March	590	890	1.521	3.904	2.537	4.072	5.265		1.327	598		20.704	7.664				25	7.689	-759	6.609	6.592	598	-25	13.015
April	476	798	1.487	3.913	2.506	2.240	5.698	906	1.203	479		19.706	7.576	21.766				29.342	-902	-17.020	7.807	479		-9.636
May	418	886	1.583	3.733	4.384	4.486		1.210	2.314	652		19.665	7.124					7.124	-504	8.870	3.524	652		12.542
June	526	963	1.502	4.037	4.202	3.452	12.995	1.914	1.306	610		31.506	7.658				53	7.712	-631	7.654	16.215	610	-53	23.795
July	456	1.012	1.677	4.655	2.006	3.712	2.790	1.586	1.585	526		20.004	7.961	21.126				29.087	-162	-15.408	5.961	526		-9.083
August	519	1.135	1.484	4.472	2.049	1.329	2.252			633		13.873	7.863					7.863	-253	3.377	2.252	633		6.010
September	546	1.104	1.716	3.680	5.024	1.713	4.338		1.456	561		20.138	6.586				11	6.597	459	6.737	5.794	561	-11	13.540
October	555	1.044	1.439	4.103	1.237	6.581	3.338	1.088		3000		22.385	6.487		20.972		13	27.471	653	7.818	-16.545	3.000	-13	-5.086
November	503	1.023	1.517	3.621	1.013	2.453	3.165		3.304	578		17.178	7.008			5.456		12.465	-344	3.466	6.469	-4.878		4.713
December	397	1.139	1.425	3.126		1.056		1.727		505		9.374	6.453				4.737	11.190	-367	1.056	1.727	505	-4.737	-1.815
TOTAL YEAR	6.040	12.152	18.572	47.714	30.741	41.765	55.084	14.832	15.834	9.262		251.995	89.348	42.893	42.638	5.456	6.534	186.869	-4.871	29.613	43.112	3.806	-6.534	65.126

GOVERNMENT DEBT: NET FINANCING IN 2023
(accumulative net amounts)

(EURO million)

DATE	ISSUES											REDEMPTIONS					NET FINANCING							
	T-BILLS				T-BONDS							Other Debts	TOTAL	T-BILLS	T-BONDS			OTHER AND ASSUMED DEBT	TOTAL					
	3-months	6-months	9-months	12-months	Up to 3-years	5-7-years	10-years	15-years	20-years and above	Inflation linked	Up to 5-years				10-years and above	Inflation linked	Up to 5-years			10-years and above	Inflation linked			
January	550	1.110	1.802	4.582	2.863	5.266		1.401	1.358	507		19.441	8.241		21.666		1.696	31.603	-197	8.130	-18.906	507	-1.696	-12.162
February	1.056	2.158	3.221	8.471	5.784	10.671	15.242	6.400	3.340	1119		57.462	16.968		21.666		1.696	40.330	-2.061	16.455	3.316	1.119	-1.696	17.132
March	1.646	3.048	4.742	12.375	8.321	14.743	20.507	6.400	4.667	1.717		78.166	24.632		21.666		1.721	48.019	-2.820	23.064	9.908	1.717	-1.721	30.147
April	2.122	3.846	6.229	16.288	10.826	16.983	26.205	7.307	5.870	2.196		97.872	32.208	21.766	21.666		1.721	77.361	-3.722	6.043	17.715	2.196	-1.721	20.511
May	2.539	4.733	7.812	20.020	15.210	21.469	26.205	8.517	8.183	2.849		117.537	39.331	21.766	21.666		1.721	84.484	-4.227	14.914	21.239	2.849	-1.721	33.053
June	3.065	5.695	9.314	24.057	19.412	24.921	39.200	10.431	9.489	3.459		149.044	46.990	21.766	21.666		1.774	92.196	-4.858	22.567	37.454	3.459	-1.774	56.848
July	3.520	6.707	10.991	28.712	21.418	28.634	41.990	12.016	11.074	3.985		169.047	54.950	42.893	21.666		1.774	121.283	-5.020	7.159	43.414	3.985	-1.774	47.764
August	4.039	7.842	12.475	33.184	23.467	29.962	44.243	12.016	11.074	4.618		182.920	62.814	42.893	21.666		1.774	129.146	-5.273	10.536	45.667	4.618	-1.774	53.774
September	4.585	8.946	14.191	36.864	28.491	31.675	48.581	12.016	12.530	5.179		203.058	69.400	42.893	21.666		1.785	135.744	-4.814	17.273	51.461	5.179	-1.785	67.314
October	5.140	9.990	15.630	40.967	29.728	38.256	51.920	13.105	12.530	8.179		225.443	75.887	42.893	42.638		1.797	163.215	-4.161	25.091	34.916	8.179	-1.797	62.228
November	5.643	11.013	17.147	44.588	30.741	40.709	55.084	13.105	15.834	8.757		242.621	82.895	42.893	42.638	5.456	1.797	175.679	-4.504	28.557	41.385	3.301	-1.797	66.942
December	6.040	12.152	18.572	47.714	30.741	41.765	55.084	14.832	15.834	9.262		251.995	89.348	42.893	42.638	5.456	6.534	186.869	-4.871	29.613	43.112	3.806	-6.534	65.126
TOTAL YEAR	6.040	12.152	18.572	47.714	30.741	41.765	55.084	14.832	15.834	9.262		251.995	89.348	42.893	42.638	5.456	6.534	186.869	-4.871	29.613	43.112	3.806	-6.534	65.126

GOVERNMENT DEBT: MATURITY PROFILE OF OUTSTANDING DEBT AS AT 05.31.2024



CENTRAL GOVERNMENT DEBT MARKET TURNOVER
OUTRIGHT AND REPO TRANSACTIONS

(Daily average EURO million)

DATE	T-BILLS		GOV. BONDS		STRIPPED GOV. BONDS		TOTAL TURNOVER
	Wholesale sector	retail sector	Wholesale sector	retail sector	Wholesale sector	retail sector	
2005	8.742	0	77.278	0	1.032	0	87.052
2006	6.650	0	81.119	0	917	0	88.686
2007	6.287	0	81.895	0	1.279	0	89.461
2008	8.718	0	67.624	0	2.140	0	78.483
2009	12.083	0	58.600	0	1.847	0	72.531
2010	12.866	0	58.056	1	1.020	0	71.944
2011	14.377	0	63.420	3	1.238	0	79.041
2012	11.543	0	43.145	5	1.445	0	56.143
2013	10.904	0	46.527	1	1.627	0	59.060
2014	8.100	0	57.896	1	1.545	0	67.542
2015	7.444	0	40.435	1	824	0	48.705
2016	8.067	0	32.375	0	382	0	40.826
2017	6.930	0	36.512	0	855	0	44.298
2018	8.430	0	54.982	0	1.840	0	65.253
2019	11.900	0	63.212	0	3.887	0	78.999
2020	8.884	0	67.276	0	3.877	0	80.036
2021	13.539	0	71.440	1	4.872	0	89.851
2022	8.480	0	67.766	0	2.830	0	79.075
2023	6.607	1	76.621	0	2.259	0	85.487
January	8.304	0	70.817	0	831	0	79.953
February	7.364	1	78.014	0	696	0	86.075
March	8.071	1	77.161	0	847	0	86.081
April	6.235	1	68.407	0	3.138	0	77.782
May	6.438	1	72.262	0	2.978	0	81.679
June	7.129	1	81.758	0	3.335	0	92.223
July	6.951	1	78.470	0	2.812	0	88.234
August	6.647	1	69.350	0	2.773	0	78.771
September	6.402	1	80.282	0	2.397	0	89.082
October	5.343	1	82.957	0	2.824	0	91.125
November	5.085	1	80.341	0	2.385	0	87.812
December	5.035	1	79.164	0	2.172	0	86.372
2024	4.208	1	79.119	0	3.430	0	86.758
January	5.743	1	86.979	0	2.918	0	95.641
February	4.882	1	91.572	0	4.068	0	100.523
March	3.245	1	69.866	0	3.700	0	76.812
April	2.889	1	67.687	0	3.057	0	73.634

Retail sector includes data from:

Send: Electronic platform for fixed income trading aimed at retail investors

Merf : Fixed income stock exchange market

Marf: The Alternative Fixed-Income Market aimed mainly at Spanish and foreign institutional investors

In September 2017 a change of source happened due to the entry into force of T2S

Source:

Up to August 2017 Bank of Spain

From September 2017 Iberclear and electronic platforms

CENTRAL GOVERNMENT BOND MARKET TURNOVER
BREAKDOWN BY ELECTRONIC MARKET, INTERDEALER BROKERS AND THIRD PARTIES
OUTRIGHT AND REPO TRANSACTIONS

(Euro million)

DATE	SENAF		MTS		EUROMTS		INTERDEALER BROKER AND THIRD PARTIES		TOTAL MARKET
	TRADING	%	TRADING	%	TRADING	%	TRADING	%	
2005	57.554	0,3	83.830	0,4	24.462	0,1	19.539.945	99,2	19.705.791
2006	89.118	0,4	72.581	0,4	11.170	0,1	20.512.532	99,2	20.685.400
2007	55.049	0,3	66.484	0,3	10.746	0,1	20.668.932	99,4	20.801.210
2008	27.925	0,2	34.111	0,2	6.943	0,0	17.175.243	99,6	17.244.221
2009	44.820	0,3	59.194	0,4	4.090	0,0	14.893.587	99,3	15.001.690
2010	75.248	0,5	106.621	0,7	3.492	0,0	14.793.087	98,8	14.978.448
2011	77.429	0,5	75.204	0,5	0	0,0	16.146.184	99,1	16.298.817
2012	32.448	0,3	46.939	0,4	0	0,0	10.965.855	99,3	11.045.241
2013	51.689	0,4	97.833	0,8	0	0,0	11.714.867	98,7	11.864.388
2014	77.404	0,5	160.583	1,1	12.898	0,1	14.512.593	98,3	14.763.478
2015	52.254	0,5	136.430	1,3	18.807	0,2	10.143.946	98,0	10.351.437
2016	63.963	0,8	164.814	2,0	11.648	0,1	8.047.692	97,1	8.288.116
2017	59.543	0,6	164.722	1,8	6.051	0,1	9.080.255	97,5	9.310.570
2018	51.364	0,4	136.132	1,0	7.083	0,1	13.880.941	98,6	14.075.520
2019	76.795	0,5	111.927	0,7	2.163	0,0	15.865.042	98,8	16.055.926
2020	77.957	0,5	101.149	0,6	3.509	0,0	17.107.245	98,9	17.289.860
2021	114.938	0,6	180.151	1,0	3.142	0,0	18.276.303	98,4	18.574.534
2022	82.099	0,5	110.103	0,6	1.603	0,0	17.221.961	98,9	17.415.765
2023	156.028	0,8	253.918	1,3	2.320	0,0	19.125.998	97,9	19.538.263
January	13.393	0,9	23.779	1,5	70	0,0	1.520.742	97,6	1.557.984
February	9.635	0,6	14.659	0,9	116	0,0	1.535.869	98,4	1.560.278
March	16.459	0,9	23.213	1,3	154	0,0	1.734.890	97,8	1.774.715
April	8.122	0,7	13.003	1,1	146	0,0	1.210.060	98,3	1.231.331
May	14.009	0,9	22.048	1,4	364	0,0	1.553.337	97,7	1.589.757
June	21.779	1,2	36.162	2,0	660	0,0	1.740.072	96,7	1.798.673
July	17.285	1,0	28.685	1,7	382	0,0	1.601.517	97,2	1.647.869
August	9.062	0,6	16.975	1,1	101	0,0	1.568.917	98,4	1.595.055
September	16.008	0,9	25.018	1,5	78	0,0	1.644.824	97,6	1.685.927
October	12.747	0,7	20.420	1,1	130	0,0	1.791.750	98,2	1.825.046
November	12.192	0,7	20.741	1,2	82	0,0	1.734.495	98,1	1.767.509
December	5.337	0,4	9.219	0,6	38	0,0	1.489.526	99,0	1.504.120
2024	20.501	0,3	42.769	0,6	236	20,0	6.661.655	106,3	6.725.161
January	5.988	0,3	11.731	0,6	145	0,0	1.895.677	99,1	1.913.541
February	3.952	0,2	7.976	0,4	63	0,0	1.911.018	99,4	1.923.008
March	4.544	0,3	9.481	0,6	12	0,0	1.453.146	99,0	1.467.183
April	6.017	0,4	13.582	1,0	16	0,0	1.401.814	98,6	1.421.429

Source:

Up to August 2017 Bank of Spain. In September 2017 a change of source happened due to the entry into force of T2S.
From September 2017 Iberclear and electronic platforms.

STRIPPING / RECONSTITUTING AND TRADING (MONTHLY TOTALS)

(Face value, Euro million)

DATE	GROSS TRIPPING	RECONSTITUTION	NET STRIPPING	ACCUMULATED NET STRIPPING
2002	6.519,50	2.558,46	3.961,05	20.593,58
2003	5.917,50	2.225,56	3.691,94	21.522,28
2004	4.545,78	1.789,84	2.755,93	22.054,05
2005	3.881,54	2.316,39	1.565,14	20.697,24
2006	5.998,99	2.121,08	3.877,91	23.118,64
2007	7.490,13	4.282,52	3.207,61	25.339,07
2008	4.926,46	2.400,87	2.525,59	25.293,19
2009	4.024,70	1.016,54	3.008,16	28.301,36
2010	17.077,74	3.808,55	13.269,19	37.637,59
2011	9.924,52	2.586,64	7.337,88	44.535,95
2012	8.744,12	2.550,82	6.193,30	47.340,56
2013	9.680,36	2.416,94	7.263,42	52.340,23
2014	19.554,45	6.136,23	13.418,22	62.441,91
2015	12.451,48	7.297,33	5.154,15	64.424,33
2016	15.933,88	7.583,61	8.350,26	68.661,21
2017	5.499,67	5.552,44	-52,77	64.460,02
2018	5.641,01	3.330,65	2.310,36	62.873,29
2019	4.283,00	6.773,37	-2.490,37	57.051,12
2020	2.555,91	2.959,90	-403,99	52.911,28
2021	5.316,86	2.119,34	3.197,52	53.333,33
2022	7.839,81	2.272,97	5.566,84	56.512,08
2023	3.788,08	2.052,66	1.735,42	55.848,99
January	28,78	21,09	7,69	55.675,26 *
February	248,48	232,24	16,23	55.691,50
March	215,83	82,29	133,54	55.825,03
April	141,70	40,71	101,00	55.882,54 *
May	555,94	97,18	458,76	56.341,30 *
June	126,18	99,23	26,94	56.368,25
July	415,34	173,79	241,55	55.807,18 *
August	198,29	102,62	95,66	55.902,84
September	72,84	114,79	-41,95	55.860,89
October	1.175,05	979,57	195,48	55.348,48 *
November	287,54	29,54	258,00	55.606,47
December	322,11	79,59	242,52	55.848,99
2024	1.733,94	990,99	742,94	55.402,35
January	41,69	61,42	-19,72	54.639,68 *
February	944,64	797,17	147,47	54.787,15
March	381,47	119,63	261,85	55.049,00
April	366,13	12,78	353,35	55.034,59 *

* Due to coupon payment or redemption at end of month

Source: Bank of Spain, Iberclear and General Secretariat of the Treasury and International Finance.

THE STRIPS MARKET WITH CAC's
(Principal only)
Outlook as of 04-30-24

LINES		MAXIMUM FACE VALUE OF STRIPS	NET STRIPPING	% STRIPPED DEBT OVER STRIPPABLE DEBT	% THIRD PARTIES HOLDINGS
12I40 PRL 31.05.24	0,00%	19.477,43	0,00	0,00	0,00
12F50 PRL 30.07.24	0,25%	17.697,64	364,40	2,06	99,20
126X6 PRL 31.10.24	2,75%	24.225,67	1.281,30	5,29	99,15
12I16 PRL 31.01.25	0,00%	21.383,01	0,00	0,00	0,00
127E4 PRL 30.04.25	1,60%	21.746,58	866,60	3,98	98,83
127Y2 PRL 31.10.25	2,15%	26.983,70	649,80	2,41	98,12
12H90 PRL 31.01.26	0,00%	21.299,79	0,00	0,00	0,00
128F9 PRL 30.04.26	1,95%	22.952,14	554,20	2,41	97,02
12L86 PRL 31.05.26	2,80%	23.585,40	0,00	0,00	0,00
128K9 PRL 31.10.26	1,30%	28.677,47	57,50	0,20	98,61
128V6 PRL 30.04.27	1,50%	25.929,40	257,10	0,99	99,84
12G67 PRL 30.07.27	0,80%	23.143,58	137,20	0,59	99,13
12B21 PRL 31.10.27	1,45%	25.155,83	81,90	0,33	96,21
12C04 PRL 30.04.28	1,40%	27.973,82	63,20	0,23	90,51
12C38 PRL 30.07.28	1,40%	24.851,30	55,00	0,22	96,91
125H1 PRL 31.10.28	5,15%	20.392,03	25,30	0,12	90,91
12E93 PRL 30.04.29	1,45%	23.065,30	34,50	0,15	42,32
12L03 PRL 30.07.29	0,80%	27.424,41	1,00	0,00	100,00
12G18 PRL 31.10.29	0,60%	25.484,31	0,00	0,00	0,00
12G75 PRL 30.04.30	0,50%	25.569,17	5,00	0,02	100,00
127J3 PRL 30.07.30	1,95%	25.737,64	42,10	0,16	92,40
12H09 PRL 31.10.30	1,25%	27.096,47	0,50	0,00	0,00
12I81 PRL 30.04.31	0,10%	26.222,15	0,00	0,00	0,00
12J23 PRL 31.10.31	0,50%	25.958,15	0,00	0,00	0,00
12K79 PRL 30.04.32	0,70%	24.914,92	0,00	0,00	0,00
12L37 PRL 31.10.32	2,55%	23.187,70	0,00	0,00	0,00
12M10 PRL 30.04.33	3,15%	24.252,01	0,00	0,00	0,00
12B05 PRL 30.07.33	2,35%	22.621,53	19,50	0,09	94,87
12N01 PRL 31.10.33	3,55%	24.921,14	0,00	0,00	0,00
12F68 PRL 30.07.35	1,85%	22.008,46	34,60	0,16	100,00
12J31 PRL 30.07.37	0,85%	14.652,04	0,00	0,00	0,00
12M36 PRL 30.07.39	3,90%	14.782,78	0,00	0,00	0,00
12H17 PRL 31.10.40	1,20%	19.796,28	0,00	0,00	0,00
12L11 PRL 30.07.42	1,00%	11.572,42	1,00	0,01	100,00
12M44 PRL 30.07.43	3,45%	13.820,97	0,00	0,00	0,00
126E6 PRL 31.10.44	5,15%	16.190,54	1.315,90	8,13	99,62
128L7 PRL 31.10.46	2,90%	20.000,74	486,30	2,43	100,00
12E44 PRL 31.10.48	2,70%	18.858,53	1.388,60	7,36	99,89
12H25 PRL 31.10.50	1,00%	22.619,06	333,90	1,48	99,43
12L45 PRL 31.10.52	1,90%	19.990,39	557,40	2,79	100,00
12E36 PRL 31.10.64	4,00%	1.000,00	196,30	19,63	100,00
128U8 PRL 30.07.66	3,45%	15.926,56	4.842,90	30,41	67,95
12J49 PRL 31.10.71	1,45%	7.828,27	429,60	5,49	99,77
TOTAL		920.976,73	14.082,60	1,53	88,25

THE STRIPS MARKET WITH CAC's
(Coupon only)
Outlook as of 04-30-24

LINES	MAXIMUM FACE VALUE OF STRIPS	NET STRIPPING	% STRIPPED DEBT OVER STRIPPABLE DEBT	% THIRD PARTIES HOLDINGS
12I73 CUP 31.05.24	660,39	0,00	0,00	0,00
127R6 CUP 30.07.24	4.080,44	171,80	4,21	95,38
125I9 CUP 31.10.24	8.051,59	199,83	2,48	87,11
12H74 CUP 31.01.25	0,00	0,00	0,00	0,00
127F1 CUP 30.04.25	3.002,94	29,94	1,00	87,45
12L94 CUP 31.05.25	660,39	0,00	0,00	0,00
127S4 CUP 30.07.25	4.036,19	170,89	4,23	96,80
125J7 CUP 31.10.25	7.385,38	164,59	2,23	64,70
12H82 CUP 31.01.26	0,00	0,00	0,00	0,00
128G7 CUP 30.04.26	2.655,00	16,08	0,61	79,85
12M02 CUP 31.05.26	660,39	0,00	0,00	0,00
127T2 CUP 30.07.26	4.036,19	170,89	4,23	93,36
125K5 CUP 31.10.26	6.805,23	150,62	2,21	87,25
128W4 CUP 30.04.27	2.207,43	5,27	0,24	43,83
127U0 CUP 30.07.27	4.036,19	170,89	4,23	94,93
125L3 CUP 31.10.27	6.432,43	149,88	2,33	72,24
12B96 CUP 30.04.28	1.818,49	1,42	0,08	89,44
127V8 CUP 30.07.28	3.851,04	169,79	4,41	95,25
125M1 CUP 31.10.28	6.242,07	148,69	2,38	78,80
12F01 CUP 30.04.29	1.426,86	0,53	0,04	100,00
127W6 CUP 30.07.29	3.503,13	169,02	4,82	98,51
126F3 CUP 31.10.29	5.017,48	147,39	2,94	92,79
12G83 CUP 30.04.30	1.092,41	0,03	0,00	100,00
127X4 CUP 30.07.30	2.831,75	169,01	5,97	98,53
126G1 CUP 31.10.30	4.864,57	147,39	3,03	78,82
12I99 CUP 30.04.31	964,56	0,00	0,00	0,00
128Y0 CUP 30.07.31	2.781,85	168,19	6,05	89,78
126H9 CUP 31.10.31	4.525,87	147,38	3,26	89,91
12K87 CUP 30.04.32	938,34	0,00	0,00	0,00
128Z7 CUP 30.07.32	2.781,85	168,19	6,05	98,69
126I7 CUP 31.10.32	4.396,07	147,38	3,35	89,95
12M28 CUP 30.04.33	763,94	0,00	0,00	0,00
129A8 CUP 30.07.33	2.781,85	168,19	6,05	98,69
126J5 CUP 31.10.33	3.804,79	147,38	3,87	90,61
129B6 CUP 30.07.34	2.250,24	167,73	7,45	74,54
126K3 CUP 31.10.34	2.920,09	147,38	5,05	94,52
129C4 CUP 30.07.35	2.250,24	167,73	7,45	94,18
126L1 CUP 31.10.35	2.920,09	147,38	5,05	78,80
129D2 CUP 30.07.36	1.843,08	167,09	9,07	96,57
126M9 CUP 31.10.36	2.920,09	147,38	5,05	91,99
129E0 CUP 30.07.37	1.843,08	167,09	9,07	74,69
126N7 CUP 31.10.37	2.920,09	147,38	5,05	94,71
129F7 CUP 30.07.38	1.718,54	167,09	9,72	98,49
126O5 CUP 31.10.38	2.920,09	147,38	5,05	92,56
129G5 CUP 30.07.39	1.718,54	167,09	9,72	98,74
126P2 CUP 31.10.39	2.920,09	147,38	5,05	87,82
129H3 CUP 30.07.40	1.142,01	167,09	14,63	74,43
126Q0 CUP 31.10.40	2.920,09	147,38	5,05	80,95
129I1 CUP 30.07.41	1.142,01	167,09	14,63	83,72
126R8 CUP 31.10.41	2.682,53	147,38	5,49	93,55
129J9 CUP 30.07.42	1.142,01	167,09	14,63	98,53
126S6 CUP 31.10.42	2.682,53	147,38	5,49	94,31
129K7 CUP 30.07.43	1.026,29	167,08	16,28	98,32
126T4 CUP 31.10.43	2.682,53	147,38	5,49	95,23
129L5 CUP 30.07.44	549,47	167,08	30,41	98,71
126U2 CUP 31.10.44	2.682,53	147,38	5,49	94,07
129M3 CUP 30.07.45	549,47	167,08	30,41	98,67
126M5 CUP 31.10.45	1.848,72	79,61	4,31	97,56
129N1 CUP 30.07.46	549,47	167,08	30,41	98,63
126N3 CUP 31.10.46	1.848,72	79,61	4,31	95,62
129O9 CUP 30.07.47	549,47	167,08	30,41	98,62
12C53 CUP 31.10.47	1.268,70	65,50	5,16	97,67
129P6 CUP 30.07.48	549,47	167,08	30,41	98,63
12C61 CUP 31.10.48	1.268,70	65,50	5,16	97,67
129Q4 CUP 30.07.49	549,47	167,08	30,41	98,71
12C79 CUP 31.10.49	759,52	28,02	3,69	96,29
129R2 CUP 30.07.50	549,47	167,08	30,41	95,73
12C87 CUP 31.10.50	759,52	28,02	3,69	96,29
129S0 CUP 30.07.51	549,47	167,08	30,41	98,71
12C95 CUP 31.10.51	533,33	24,67	4,63	100,00
129T8 CUP 30.07.52	549,47	167,08	30,41	98,62
12D03 CUP 31.10.52	533,33	24,67	4,63	100,00
129U6 CUP 30.07.53	549,47	167,08	30,41	98,58
12D11 CUP 31.10.53	153,51	14,07	9,17	100,00
129V4 CUP 30.07.54	549,47	167,08	30,41	98,61
12D29 CUP 31.10.54	153,51	14,07	9,17	100,00
129W2 CUP 30.07.55	549,47	167,08	30,41	98,58
12D37 CUP 31.10.55	153,51	14,07	9,17	93,87
129X0 CUP 30.07.56	549,47	167,08	30,41	98,58
12D45 CUP 31.10.56	153,51	14,07	9,17	93,87
129Y8 CUP 30.07.57	549,47	167,08	30,41	98,45
12D52 CUP 31.10.57	153,51	14,07	9,17	93,87
129Z5 CUP 30.07.58	549,47	167,08	30,41	98,45
12D60 CUP 31.10.58	153,51	14,07	9,17	93,87
12A06 CUP 30.07.59	549,47	167,08	30,41	98,45
12D78 CUP 31.10.59	153,51	14,07	9,17	93,87
12A14 CUP 30.07.60	549,47	167,08	30,41	98,45
12D86 CUP 31.10.60	153,51	14,07	9,17	93,87
12A22 CUP 30.07.61	549,47	167,08	30,41	98,67
12D94 CUP 31.10.61	153,51	14,07	9,17	94,58
12A30 CUP 30.07.62	549,47	167,08	30,41	98,67
12E02 CUP 31.10.62	153,51	14,07	9,17	93,87
12A48 CUP 30.07.63	549,47	167,08	30,41	98,45
12E10 CUP 31.10.63	153,51	14,07	9,17	100,00
12A55 CUP 30.07.64	549,47	167,08	30,41	98,49
12E28 CUP 31.10.64	153,51	14,07	9,17	93,87
12A63 CUP 30.07.65	549,47	167,08	30,41	98,45
12J56 CUP 31.10.65	113,51	6,22	5,48	95,13
12A71 CUP 30.07.66	549,47	167,08	30,41	92,47
12J64 CUP 31.10.66	113,51	6,22	5,48	78,42
12J72 CUP 31.10.67	113,51	6,22	5,48	95,13
12J80 CUP 31.10.68	113,51	6,22	5,48	95,13
12J98 CUP 31.10.69	113,51	6,22	5,48	95,13
12K04 CUP 31.10.70	113,51	6,22	5,48	95,13
12K12 CUP 31.10.71	113,51	6,22	5,48	97,54
TOTAL	180.438,93	11.044,84	6,12	93,12

In bold are the references with more than 10% stripped

Source: Bank of Spain, Iberclear and General Secretariat of the Treasury and International Finance.

THE STRIPS MARKET WITHOUT CAC's
(Principal and coupon)
Outlook as of 04-30-24

LINES		MAXIMUM FACE VALUE OF STRIPS	NET STRIPPING	% STRIPPED DEBT OVER STRIPPABLE DEBT	% THIRD PARTIES HOLDINGS	
122U1	PRL 30.07.25	4,65%	24.189,66	640,00	2,65	88,03
123I4	PRL 30.07.26	5,90%	24.657,91	886,60	3,60	97,92
11876	PRL 31.01.29	6,00%	26.658,76	3.264,60	12,25	91,17
12593	PRL 30.07.32	5,75%	26.118,11	2.669,50	10,22	98,45
120D1	PRL 31.01.37	4,20%	22.243,58	3.230,80	14,52	98,18
120O8	PRL 30.07.40	4,90%	20.669,79	2.192,30	10,61	97,31
122V9	PRL 30.07.41	4,70%	21.477,16	5.880,80	27,38	98,83
12692	CUP 30.07.24		6.103,67	619,39	10,15	95,16
11991	CUP 31.01.25		2.533,76	331,56	13,09	93,00
12700	CUP 30.07.25		6.103,67	619,39	10,15	87,50
12007	CUP 31.01.26		2.533,76	331,56	13,09	97,51
12718	CUP 30.07.26		4.978,85	589,62	11,84	93,82
12023	CUP 31.01.27		2.533,76	331,56	13,09	99,05
12726	CUP 30.07.27		3.524,04	537,32	15,25	98,64
12031	CUP 31.01.28		2.533,76	331,56	13,09	97,99
12734	CUP 30.07.28		3.524,04	537,32	15,25	90,55
12049	CUP 31.01.29		2.533,76	331,56	13,09	96,53
12742	CUP 30.07.29		3.524,04	537,32	15,25	99,36
12940	CUP 31.01.30		934,23	135,69	14,52	94,62
12759	CUP 30.07.30		3.524,04	537,32	15,25	97,87
12957	CUP 31.01.31		934,23	135,69	14,52	87,94
12767	CUP 30.07.31		3.524,04	537,32	15,25	94,51
12965	CUP 31.01.32		934,23	135,69	14,52	97,22
12775	CUP 30.07.32		3.524,04	537,32	15,25	98,55
12973	CUP 31.01.33		934,23	135,69	14,52	93,70
120P5	CUP 30.07.33		2.022,25	383,82	18,98	94,91
12981	CUP 31.01.34		934,23	135,69	14,52	94,81
120Q3	CUP 30.07.34		2.022,25	383,82	18,98	97,57
12999	CUP 31.01.35		934,23	135,69	14,52	95,10
120R1	CUP 30.07.35		2.022,25	383,82	18,98	97,69
120A7	CUP 31.01.36		934,23	135,69	14,52	95,64
120S9	CUP 30.07.36		2.022,25	383,82	18,98	98,28
120B5	CUP 31.01.37		934,23	135,69	14,52	96,71
120T7	CUP 30.07.37		2.022,25	383,82	18,98	96,04
120U5	CUP 30.07.38		2.022,25	383,82	18,98	98,36
120V3	CUP 30.07.39		2.022,25	383,82	18,98	99,28
120W1	CUP 30.07.40		2.022,25	383,82	18,98	98,84
122W7	CUP 30.07.41		1.009,43	276,40	27,38	96,88
TOTAL			241.675,47	29.907,21	12,37	96,46

In bold are the references with more than 10% stripped

Source: Bank of Spain, Iberclear and General Secretariat of the Treasury and International Finance.

THE STRIPS MARKET
Outlook as of 04-30-24

LINES	MAXIMUM FACE VALUE OF STRIPS	NET STRIPPING	% STRIPPED DEBT OVER STRIPPABLE DEBT	% THIRD PARTIES HOLDINGS
TOTAL DEBT WITH CAC's (Principal only)	920.976,73	14.082,60	1,53	88,25
TOTAL DEBT WITH CAC's (Coupon only)	180.438,93	11.044,84	6,12	93,12
TOTAL DEBT WITHOUT CAC's (Principal and coupon)	241.675,47	29.907,21	12,37	96,46
TOTAL DEBT	1.343.091,13	55.034,65	4,10	93,69

Source: Bank of Spain, Iberclear and General Secretariat of the Treasury and International Finance.